



# SPEC® CINT2006 Result

Copyright 2006-2014 Standard Performance Evaluation Corporation

Dell Inc.

SPECint®\_rate2006 = 2060

PowerEdge R920 (Intel Xeon E7-4870 v2, 2.30 GHz)

SPECint\_rate\_base2006 = 2010

CPU2006 license: 55

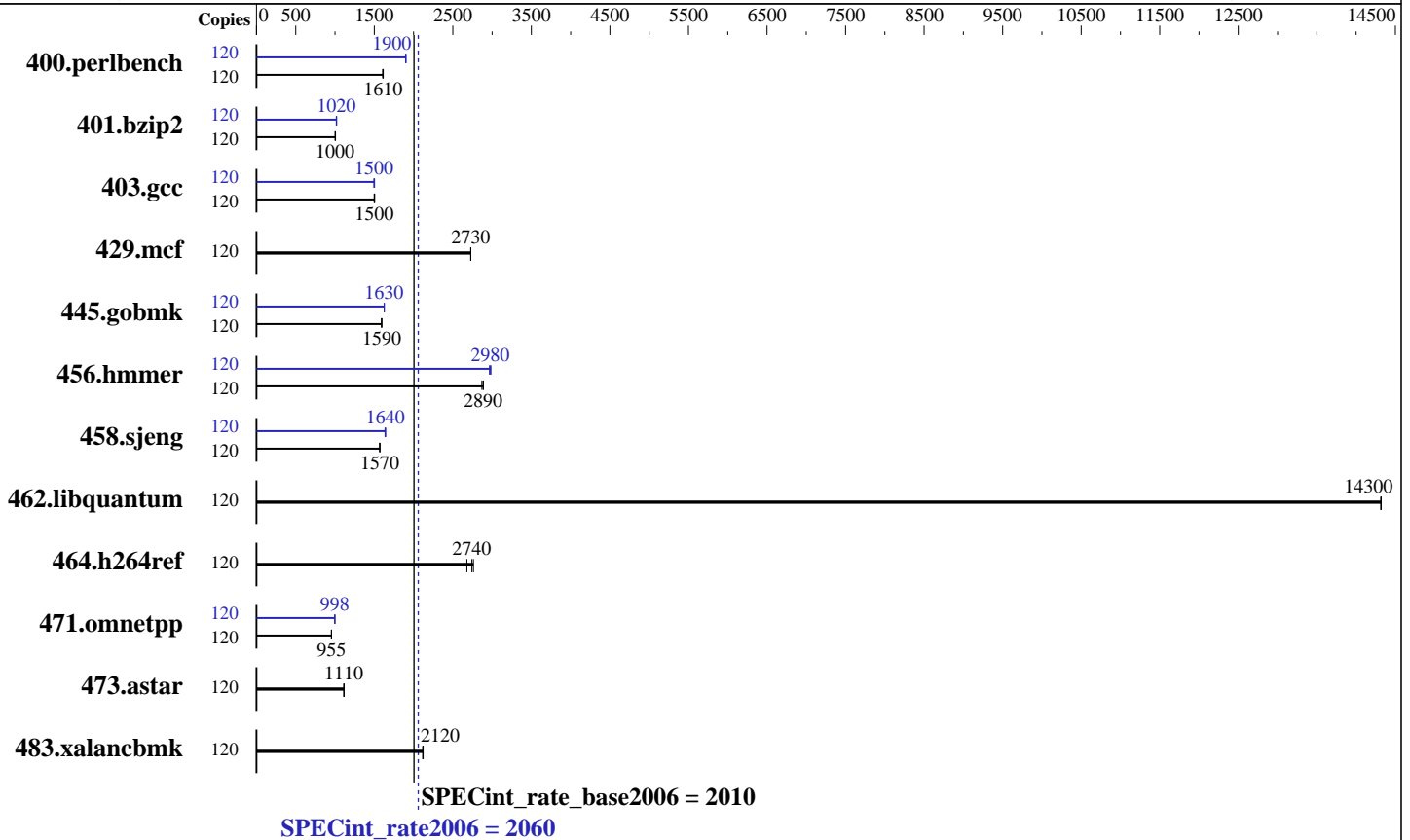
Test date: Feb-2014

Test sponsor: Dell Inc.

Hardware Availability: Mar-2014

Tested by: Dell Inc.

Software Availability: Mar-2014



## Hardware

CPU Name: Intel Xeon E7-4870 v2  
 CPU Characteristics: Intel Turbo Boost Technology up to 2.90 GHz  
 CPU MHz: 2300  
 FPU: Integrated  
 CPU(s) enabled: 60 cores, 4 chips, 15 cores/chip, 2 threads/core  
 CPU(s) orderable: 2,4 chip  
 Primary Cache: 32 KB I + 32 KB D on chip per core  
 Secondary Cache: 256 KB I+D on chip per core  
 L3 Cache: 30 MB I+D on chip per chip  
 Other Cache: None  
 Memory: 1 TB (64 x 16 GB 2Rx4 PC3L-12800R-11, ECC)  
 Disk Subsystem: 1 x 400 GB SAS6 SSD  
 Other Hardware: None

## Software

Operating System: SUSE Linux Enterprise Server 11 (x86\_64) 3.0.76-0.11-default  
 Compiler: C/C++: Version 14.0.0.080 of Intel C++ Studio XE for Linux  
 Auto Parallel: No  
 File System: ext2  
 System State: Run level 3 (multi-user)  
 Base Pointers: 32-bit  
 Peak Pointers: 32/64-bit  
 Other Software: Microquill SmartHeap V10.0



# SPEC CINT2006 Result

Copyright 2006-2014 Standard Performance Evaluation Corporation

Dell Inc.

SPECint\_rate2006 = 2060

PowerEdge R920 (Intel Xeon E7-4870 v2, 2.30 GHz)

SPECint\_rate\_base2006 = 2010

CPU2006 license: 55

Test date: Feb-2014

Test sponsor: Dell Inc.

Hardware Availability: Mar-2014

Tested by: Dell Inc.

Software Availability: Mar-2014

## Results Table

Benchmark	Base							Peak						
	Copies	Seconds	Ratio	Seconds	Ratio	Seconds	Ratio	Copies	Seconds	Ratio	Seconds	Ratio	Seconds	Ratio
400.perlbench	120	730	1610	<u>727</u>	<u>1610</u>	726	1610	120	<u>616</u>	<u>1900</u>	616	1900	618	1900
401.bzip2	120	1156	1000	<u>1155</u>	<u>1000</u>	1151	1010	120	<u>1136</u>	<u>1020</u>	1135	1020	1140	1020
403.gcc	120	<u>644</u>	<u>1500</u>	642	1510	644	1500	120	<u>645</u>	<u>1500</u>	643	1500	646	1500
429.mcf	120	<u>401</u>	<u>2730</u>	401	2730	401	2730	120	<u>401</u>	<u>2730</u>	401	2730	401	2730
445.gobmk	120	791	1590	789	1590	<u>789</u>	<u>1590</u>	120	<u>774</u>	<u>1630</u>	774	1630	774	1630
456.hammer	120	<u>388</u>	<u>2890</u>	388	2890	390	2870	120	375	2980	<u>376</u>	<u>2980</u>	377	2970
458.sjeng	120	<u>925</u>	<u>1570</u>	925	1570	924	1570	120	887	1640	<u>884</u>	<u>1640</u>	883	1640
462.libquantum	120	174	14300	<u>174</u>	<u>14300</u>	174	14300	120	174	14300	<u>174</u>	<u>14300</u>	174	14300
464.h264ref	120	961	2760	<u>968</u>	<u>2740</u>	991	2680	120	961	2760	<u>968</u>	<u>2740</u>	991	2680
471.omnetpp	120	<u>786</u>	<u>955</u>	785	956	786	954	120	752	998	752	997	<u>752</u>	<u>998</u>
473.astar	120	756	1110	<u>756</u>	<u>1110</u>	757	1110	120	756	1110	<u>756</u>	<u>1110</u>	757	1110
483.xalancbmk	120	390	2120	391	2120	<u>391</u>	<u>2120</u>	120	390	2120	391	2120	<u>391</u>	<u>2120</u>

Results appear in the order in which they were run. Bold underlined text indicates a median measurement.

## Submit Notes

The numactl mechanism was used to bind copies to processors. The config file option 'submit' was used to generate numactl commands to bind each copy to a specific processor. For details, please see the config file.

## Operating System Notes

Stack size set to unlimited using "ulimit -s unlimited"

## Platform Notes

BIOS settings:  
 Virtualization Technology disabled  
 Execute Disable disabled  
 System Profile set to Custom  
 Memory Patrol Scrub set to disabled  
 Sysinfo program  
 /root/Desktop/Performance/ic14.0\_Oct17\_2013/config/sysinfo.rev6818  
 \$Rev: 6818 \$ \$Date:: 2012-07-17 #\$ e86d102572650a6e4d596a3cee98f191  
 running on slesperf2 Mon Feb 10 03:00:38 2014

This section contains SUT (System Under Test) info as seen by some common utilities. To remove or add to this section, see: <http://www.spec.org/cpu2006/Docs/config.html#sysinfo>

From /proc/cpuinfo  
 model name : Intel(R) Xeon(R) CPU E7-4870 v2 @ 2.30GHz  
 4 "physical id"s (chips)

Continued on next page



# SPEC CINT2006 Result

Copyright 2006-2014 Standard Performance Evaluation Corporation

Dell Inc.

SPECint\_rate2006 = 2060

PowerEdge R920 (Intel Xeon E7-4870 v2, 2.30 GHz)

SPECint\_rate\_base2006 = 2010

CPU2006 license: 55

Test date: Feb-2014

Test sponsor: Dell Inc.

Hardware Availability: Mar-2014

Tested by: Dell Inc.

Software Availability: Mar-2014

## Platform Notes (Continued)

120 "processors"  
cores, siblings (Caution: counting these is hw and system dependent. The following excerpts from /proc/cpuinfo might not be reliable. Use with caution.)

```
cpu cores : 15
siblings  : 30
physical 0: cores 0 1 2 3 4 5 6 7 8 9 10 11 12 13 14
physical 1: cores 0 1 2 3 4 5 6 7 8 9 10 11 12 13 14
physical 2: cores 0 1 2 3 4 5 6 7 8 9 10 11 12 13 14
physical 3: cores 0 1 2 3 4 5 6 7 8 9 10 11 12 13 14
cache size : 30720 KB
```

```
From /proc/meminfo
MemTotal:      1058789108 kB
HugePages_Total:      0
Hugepagesize:    2048 kB
```

```
/usr/bin/lsb_release -d
SUSE Linux Enterprise Server 11 (x86_64)
```

```
From /etc/*release* /etc/*version*
SuSE-release:
SUSE Linux Enterprise Server 11 (x86_64)
VERSION = 11
PATCHLEVEL = 3
```

```
uname -a:
Linux slesperf2 3.0.76-0.11-default #1 SMP Fri Jun 14 08:21:43 UTC 2013
(ccab990) x86_64 x86_64 x86_64 GNU/Linux
```

```
run-level 3 Feb 10 02:52 last=S
```

```
SPEC is set to: /root/Desktop/Performance/ic14.0_Oct17_2013
Filesystem      Type  Size  Used Avail Use% Mounted on
/dev/sda2        ext2  365G  190G  174G  53% /
```

Additional information from dmidecode:

```
BIOS Dell Inc. 1.0.4 01/27/2014
Memory:
47x 00CE00B300CE M393B2G70BH0-YK0 16 GB 1333 MHz
11x 00CE04B300CE M393B2G70BH0-YK0 16 GB 1333 MHz
6x 00CE04B300CE M393B2G70CB0-YK0 16 GB 1333 MHz
```

(End of data from sysinfo program)

## General Notes

Environment variables set by runspec before the start of the run:

```
LD_LIBRARY_PATH = */root/Desktop/Performance/ic14.0_Oct17_2013/libs/32:/root/Desktop/Performance/ic14.0_Oct17_2013/libs/64:/root/Desktop/Performance/ic14.0_Oct17_2013/sh*
```

Binaries compiled on a system with 1x Core i7-860 CPU + 8GB

Continued on next page



# SPEC CINT2006 Result

Copyright 2006-2014 Standard Performance Evaluation Corporation

Dell Inc.

SPECint\_rate2006 = 2060

PowerEdge R920 (Intel Xeon E7-4870 v2, 2.30 GHz)

SPECint\_rate\_base2006 = 2010

CPU2006 license: 55

Test date: Feb-2014

Test sponsor: Dell Inc.

Hardware Availability: Mar-2014

Tested by: Dell Inc.

Software Availability: Mar-2014

## General Notes (Continued)

```

memory using RedHat EL 6.4
Transparent Huge Pages enabled with:
echo always > /sys/kernel/mm/transparent_hugepage/enabled
Filesystem page cache cleared with:
echo 1> /proc/sys/vm/drop_caches
runspec command invoked through numactl i.e.:
numactl --interleave=all runspec <etc>

```

## Base Compiler Invocation

```

C benchmarks:
  icc -m32

C++ benchmarks:
  icpc -m32

```

## Base Portability Flags

```

400.perlbench: -DSPEC_CPU_LINUX_IA32
462.libquantum: -DSPEC_CPU_LINUX
483.xalancbmk: -DSPEC_CPU_LINUX

```

## Base Optimization Flags

```

C benchmarks:
  -xSSE4.2 -ipo -O3 -no-prec-div -opt-prefetch -opt-mem-layout-trans=3

C++ benchmarks:
  -xSSE4.2 -ipo -O3 -no-prec-div -opt-prefetch -opt-mem-layout-trans=3
  -Wl,-z,muldefs -L/sh -lsmartheap

```

## Base Other Flags

```

C benchmarks:
  403.gcc: -Dalloca=_alloca

```

## Peak Compiler Invocation

```

C benchmarks (except as noted below):
  icc -m32

```

Continued on next page



# SPEC CINT2006 Result

Copyright 2006-2014 Standard Performance Evaluation Corporation

Dell Inc.

SPECint\_rate2006 = 2060

PowerEdge R920 (Intel Xeon E7-4870 v2, 2.30 GHz)

SPECint\_rate\_base2006 = 2010

CPU2006 license: 55

Test date: Feb-2014

Test sponsor: Dell Inc.

Hardware Availability: Mar-2014

Tested by: Dell Inc.

Software Availability: Mar-2014

## Peak Compiler Invocation (Continued)

400.perlbench: icc -m64

401.bzip2: icc -m64

456.hmmer: icc -m64

458.sjeng: icc -m64

C++ benchmarks:

icpc -m32

## Peak Portability Flags

400.perlbench: -DSPEC\_CPU\_LP64 -DSPEC\_CPU\_LINUX\_X64

401.bzip2: -DSPEC\_CPU\_LP64

456.hmmer: -DSPEC\_CPU\_LP64

458.sjeng: -DSPEC\_CPU\_LP64

462.libquantum: -DSPEC\_CPU\_LINUX

483.xalancbmk: -DSPEC\_CPU\_LINUX

## Peak Optimization Flags

C benchmarks:

400.perlbench: -xSSE4.2(pass 2) -prof-gen(pass 1) -ipo(pass 2)  
-O3(pass 2) -no-prec-div(pass 2) -prof-use(pass 2)  
-auto-ilp32

401.bzip2: -xSSE4.2(pass 2) -prof-gen(pass 1) -ipo(pass 2)  
-O3(pass 2) -no-prec-div(pass 2) -prof-use(pass 2)  
-opt-prefetch -auto-ilp32 -ansi-alias

403.gcc: -xSSE4.2 -ipo -O3 -no-prec-div

429.mcf: basepeak = yes

445.gobmk: -xSSE4.2(pass 2) -prof-gen(pass 1) -prof-use(pass 2)  
-ansi-alias -opt-mem-layout-trans=3

456.hmmer: -xSSE4.2 -ipo -O3 -no-prec-div -unroll2 -auto-ilp32

458.sjeng: -xSSE4.2(pass 2) -prof-gen(pass 1) -ipo(pass 2)  
-O3(pass 2) -no-prec-div(pass 2) -prof-use(pass 2)  
-unroll4 -auto-ilp32

Continued on next page



# SPEC CINT2006 Result

Copyright 2006-2014 Standard Performance Evaluation Corporation

Dell Inc.

SPECint\_rate2006 = 2060

PowerEdge R920 (Intel Xeon E7-4870 v2, 2.30 GHz)

SPECint\_rate\_base2006 = 2010

CPU2006 license: 55

Test date: Feb-2014

Test sponsor: Dell Inc.

Hardware Availability: Mar-2014

Tested by: Dell Inc.

Software Availability: Mar-2014

## Peak Optimization Flags (Continued)

462.libquantum: basepeak = yes

464.h264ref: basepeak = yes

C++ benchmarks:

471.omnetpp: -xSSE4.2(pass 2) -prof-gen(pass 1) -ipo(pass 2)  
-O3(pass 2) -no-prec-div(pass 2) -prof-use(pass 2)  
-ansi-alias -opt-ra-region-strategy=block -Wl,-z,muldefs  
-L/sh -lsmartheap

473.astar: basepeak = yes

483.xalancbmk: basepeak = yes

## Peak Other Flags

C benchmarks:

403.gcc: -Dalloca=\_alloca

The flags files that were used to format this result can be browsed at

<http://www.spec.org/cpu2006/flags/Intel-ic14.0-official-linux64.20140128.html>

<http://www.spec.org/cpu2006/flags/Dell-Platform-Settings-V1.2-revC.html>

You can also download the XML flags sources by saving the following links:

<http://www.spec.org/cpu2006/flags/Intel-ic14.0-official-linux64.20140128.xml>

<http://www.spec.org/cpu2006/flags/Dell-Platform-Settings-V1.2-revC.xml>

SPEC and SPECint are registered trademarks of the Standard Performance Evaluation Corporation. All other brand and product names appearing in this result are trademarks or registered trademarks of their respective holders.

For questions about this result, please contact the tester.  
For other inquiries, please contact [webmaster@spec.org](mailto:webmaster@spec.org).

Tested with SPEC CPU2006 v1.2.  
Report generated on Thu Jul 24 20:42:17 2014 by SPEC CPU2006 PS/PDF formatter v6932.  
Originally published on 25 March 2014.