



SPEC® CINT2006 Result

Copyright 2006-2015 Standard Performance Evaluation Corporation

Huawei

SPECint®2006 = 56.3

Huawei XH622 V3 (Intel Xeon E5-2658A v3)

SPECint_base2006 = 54.2

CPU2006 license: 3175

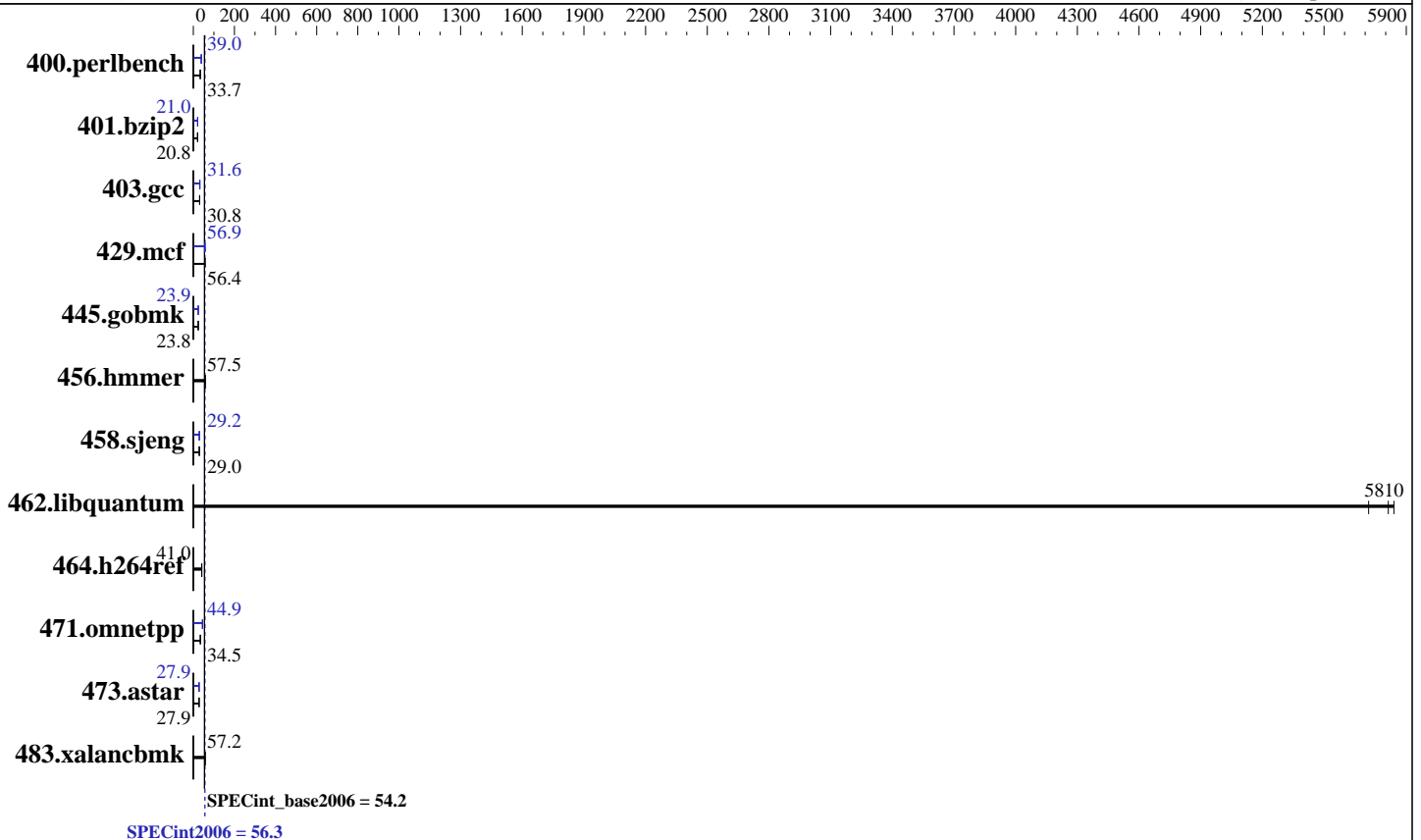
Test sponsor: Huawei

Tested by: Huawei

Test date: Mar-2015

Hardware Availability: Mar-2015

Software Availability: Sep-2014



Hardware

CPU Name: Intel Xeon E5-2658A v3
 CPU Characteristics: Intel Turbo Boost Technology up to 2.90 GHz
 CPU MHz: 2200
 FPU: Integrated
 CPU(s) enabled: 24 cores, 2 chips, 12 cores/chip
 CPU(s) orderable: 1,2 chip
 Primary Cache: 32 KB I + 32 KB D on chip per core
 Secondary Cache: 256 KB I+D on chip per core
 L3 Cache: 30 MB I+D on chip per chip
 Other Cache: None
 Memory: 256 GB (16 x 16 GB 2Rx4 PC4-2133P-R)
 Disk Subsystem: 1 x 300 GB SAS, 10000 RPM
 Other Hardware: None

Software

Operating System: Red Hat Enterprise Linux Server release 7.0 (Maipo)
 3.10.0-123.el7.x86_64
 Compiler: C/C++: Version 15.0.0.090 of Intel C++ Studio XE for Linux
 Auto Parallel: Yes
 File System: ext4
 System State: Run level 3 (multi-user)
 Base Pointers: 32/64-bit
 Peak Pointers: 32/64-bit
 Other Software: Microquill SmartHeap V10.0



SPEC CINT2006 Result

Copyright 2006-2015 Standard Performance Evaluation Corporation

Huawei

SPECint2006 = 56.3

Huawei XH622 V3 (Intel Xeon E5-2658A v3)

SPECint_base2006 = 54.2

CPU2006 license: 3175
Test sponsor: Huawei
Tested by: Huawei

Test date: Mar-2015
Hardware Availability: Mar-2015
Software Availability: Sep-2014

Results Table

Benchmark	Base						Peak					
	Seconds	Ratio	Seconds	Ratio	Seconds	Ratio	Seconds	Ratio	Seconds	Ratio	Seconds	Ratio
400.perlbench	289	33.8	290	33.7	<u>290</u>	<u>33.7</u>	<u>251</u>	<u>39.0</u>	255	38.3	250	39.0
401.bzip2	465	20.8	464	20.8	<u>464</u>	<u>20.8</u>	<u>461</u>	<u>21.0</u>	460	21.0	461	20.9
403.gcc	<u>261</u>	<u>30.8</u>	262	30.7	261	30.8	254	31.7	255	31.5	<u>254</u>	<u>31.6</u>
429.mcf	160	57.0	162	56.4	<u>162</u>	<u>56.4</u>	164	55.6	<u>160</u>	<u>56.9</u>	159	57.3
445.gobmk	439	23.9	441	23.8	<u>440</u>	<u>23.8</u>	439	23.9	439	23.9	<u>439</u>	<u>23.9</u>
456.hammer	162	57.4	162	57.5	<u>162</u>	<u>57.5</u>	162	57.4	162	57.5	<u>162</u>	<u>57.5</u>
458.sjeng	<u>417</u>	<u>29.0</u>	417	29.0	417	29.0	<u>415</u>	<u>29.2</u>	415	29.2	415	29.1
462.libquantum	<u>3.56</u>	<u>5810</u>	3.55	5840	3.62	5720	<u>3.56</u>	<u>5810</u>	3.55	5840	3.62	5720
464.h264ref	<u>540</u>	<u>41.0</u>	542	40.8	539	41.1	<u>540</u>	<u>41.0</u>	542	40.8	539	41.1
471.omnetpp	186	33.5	180	34.8	<u>181</u>	<u>34.5</u>	<u>139</u>	<u>44.9</u>	144	43.5	138	45.2
473.astar	253	27.8	249	28.2	<u>252</u>	<u>27.9</u>	<u>251</u>	<u>27.9</u>	251	27.9	249	28.2
483.xalancbmk	<u>121</u>	<u>57.2</u>	121	57.1	120	57.4	<u>121</u>	<u>57.2</u>	121	57.1	120	57.4

Results appear in the order in which they were run. Bold underlined text indicates a median measurement.

Submit Notes

The config file option 'submit' was used.

Operating System Notes

Stack size set to unlimited using "ulimit -s unlimited"

Platform Notes

BIOS configuration:

Set Power Efficiency Mode to Custom

Set Snoop Mode to ES mode

Set Intel Hyper-threading Technology to Disable

Sysinfo program /spec15/config/sysinfo.rev6914

\$Rev: 6914 \$ \$Date:: 2014-06-25 # \$ e3fbb8667b5a285932ceab81e28219e1

running on localhost.localdomain Fri Mar 13 18:54:49 2015

This section contains SUT (System Under Test) info as seen by some common utilities. To remove or add to this section, see:

<http://www.spec.org/cpu2006/Docs/config.html#sysinfo>

From /proc/cpuinfo

model name : Intel(R) Xeon(R) CPU E5-2658A v3 @ 2.20GHz

2 "physical id"s (chips)

24 "processors"

cores, siblings (Caution: counting these is hw and system dependent. The following excerpts from /proc/cpuinfo might not be reliable. Use with caution.)

Continued on next page



SPEC CINT2006 Result

Copyright 2006-2015 Standard Performance Evaluation Corporation

Huawei

SPECint2006 = 56.3

Huawei XH622 V3 (Intel Xeon E5-2658A v3)

SPECint_base2006 = 54.2

CPU2006 license: 3175

Test sponsor: Huawei

Tested by: Huawei

Test date: Mar-2015

Hardware Availability: Mar-2015

Software Availability: Sep-2014

Platform Notes (Continued)

```

cpu cores : 12
siblings  : 12
physical 0: cores 0 1 2 3 4 5 8 9 10 11 12 13
physical 1: cores 0 1 2 3 4 5 8 9 10 11 12 13
cache size : 30720 KB

```

From /proc/meminfo

```

MemTotal:      263578444 kB
HugePages_Total: 0
Hugepagesize:  2048 kB

```

From /etc/*release* /etc/*version*

```

os-release:
NAME="Red Hat Enterprise Linux Server"
VERSION="7.0 (Maipo)"
ID="rhel"
ID_LIKE="fedora"
VERSION_ID="7.0"
PRETTY_NAME="Red Hat Enterprise Linux Server 7.0 (Maipo)"
ANSI_COLOR="0;31"
CPE_NAME="cpe:/o:redhat:enterprise_linux:7.0:GA:server"
redhat-release: Red Hat Enterprise Linux Server release 7.0 (Maipo)
system-release: Red Hat Enterprise Linux Server release 7.0 (Maipo)
system-release-cpe: cpe:/o:redhat:enterprise_linux:7.0:ga:server

```

uname -a:

```

Linux localhost.localdomain 3.10.0-123.el7.x86_64 #1 SMP Mon May 5 11:16:57
EDT 2014 x86_64 x86_64 x86_64 GNU/Linux

```

run-level 3 Mar 13 18:43

SPEC is set to: /spec15

```

Filesystem      Type      Size      Used Avail Use% Mounted on
/dev/mapper/rhel-root ext4    241G      22G  207G  10% /

```

Additional information from dmidecode:

Warning: Use caution when you interpret this section. The 'dmidecode' program reads system data which is "intended to allow hardware to be accurately determined", but the intent may not be met, as there are frequent changes to hardware, firmware, and the "DMTF SMBIOS" standard.

BIOS Insyde Corp. 1.20 10/25/2014

Memory:

```

8x Micron 36ASF2G72PZ-2G1A2 16 GB 1 rank 2133 MHz
8x Micron 36ASF2G72PZ-2G1A2 16 GB 2 rank 2133 MHz

```

(End of data from sysinfo program)



SPEC CINT2006 Result

Copyright 2006-2015 Standard Performance Evaluation Corporation

Huawei

SPECint2006 = 56.3

Huawei XH622 V3 (Intel Xeon E5-2658A v3)

SPECint_base2006 = 54.2

CPU2006 license: 3175

Test sponsor: Huawei

Tested by: Huawei

Test date: Mar-2015

Hardware Availability: Mar-2015

Software Availability: Sep-2014

General Notes

Environment variables set by runspec before the start of the run:

KMP_AFFINITY = "granularity=fine,compact,1,0"

LD_LIBRARY_PATH = "/spec15/libs/32:/spec15/libs/64:/spec15/sh"

OMP_NUM_THREADS = "24"

Binaries compiled on a system with 1x Core i5-4670K CPU + 16GB memory using RedHat EL 7.0

Transparent Huge Pages enabled with:

echo always > /sys/kernel/mm/transparent_hugepage/enabled

runspec command invoked through numactl i.e.:

numactl --interleave=all runspec <etc>

The Huawei XH622 V3 and Huawei XH628 V3 and Huawei XH620 V3 are electronically equivalent.

The results have been measured on a Huawei XH628 V3 model.

Base Compiler Invocation

C benchmarks:

icc -m64

C++ benchmarks:

icpc -m64

Base Portability Flags

400.perlbench: -DSPEC_CPU_LP64 -DSPEC_CPU_LINUX_X64

401.bzip2: -DSPEC_CPU_LP64

403.gcc: -DSPEC_CPU_LP64

429.mcf: -DSPEC_CPU_LP64

445.gobmk: -DSPEC_CPU_LP64

456.hmmmer: -DSPEC_CPU_LP64

458.sjeng: -DSPEC_CPU_LP64

462.libquantum: -DSPEC_CPU_LP64 -DSPEC_CPU_LINUX

464.h264ref: -DSPEC_CPU_LP64

471.omnetpp: -DSPEC_CPU_LP64

473.astar: -DSPEC_CPU_LP64

483.xalancbmk: -DSPEC_CPU_LP64 -DSPEC_CPU_LINUX

Base Optimization Flags

C benchmarks:

-xCORE-AVX2 -ipo -O3 -no-prec-div -parallel -opt-prefetch -auto-p32

C++ benchmarks:

-xCORE-AVX2 -ipo -O3 -no-prec-div -opt-prefetch -auto-p32

-Wl,-z,muldefs -L/sh -lsmartheap64



SPEC CINT2006 Result

Copyright 2006-2015 Standard Performance Evaluation Corporation

Huawei

SPECint2006 = 56.3

Huawei XH622 V3 (Intel Xeon E5-2658A v3)

SPECint_base2006 = 54.2

CPU2006 license: 3175
Test sponsor: Huawei
Tested by: Huawei

Test date: Mar-2015
Hardware Availability: Mar-2015
Software Availability: Sep-2014

Base Other Flags

C benchmarks:

403.gcc: -Dalloca=_alloca

Peak Compiler Invocation

C benchmarks (except as noted below):

icc -m64

400.perlbench: icc -m32 -L/opt/intel/composer_xe_2015/lib/ia32

445.gobmk: icc -m32 -L/opt/intel/composer_xe_2015/lib/ia32

C++ benchmarks (except as noted below):

icpc -m64

471.omnetpp: icpc -m32 -L/opt/intel/composer_xe_2015/lib/ia32

Peak Portability Flags

400.perlbench: -DSPEC_CPU_LINUX_IA32
401.bzip2: -DSPEC_CPU_LP64
403.gcc: -DSPEC_CPU_LP64
429.mcf: -DSPEC_CPU_LP64
456.hmmer: -DSPEC_CPU_LP64
458.sjeng: -DSPEC_CPU_LP64
462.libquantum: -DSPEC_CPU_LP64 -DSPEC_CPU_LINUX
464.h264ref: -DSPEC_CPU_LP64
473.astar: -DSPEC_CPU_LP64
483.xalancbmk: -DSPEC_CPU_LP64 -DSPEC_CPU_LINUX

Peak Optimization Flags

C benchmarks:

400.perlbench: -xCORE-AVX2(pass 2) -prof-gen(pass 1) -ipo(pass 2)
-O3(pass 2) -no-prec-div(pass 2) -prof-use(pass 2)
-opt-prefetch -ansi-alias

401.bzip2: -xCORE-AVX2(pass 2) -prof-gen(pass 1) -ipo(pass 2)
-O3(pass 2) -no-prec-div -prof-use(pass 2) -auto-ilp32
-opt-prefetch -ansi-alias

Continued on next page



SPEC CINT2006 Result

Copyright 2006-2015 Standard Performance Evaluation Corporation

Huawei

SPECint2006 = 56.3

Huawei XH622 V3 (Intel Xeon E5-2658A v3)

SPECint_base2006 = 54.2

CPU2006 license: 3175

Test sponsor: Huawei

Tested by: Huawei

Test date: Mar-2015

Hardware Availability: Mar-2015

Software Availability: Sep-2014

Peak Optimization Flags (Continued)

403.gcc: -xCORE-AVX2 -ipo -O3 -no-prec-div -inline-calloc
-opt-malloc-options=3 -auto-ilp32

429.mcf: -xCORE-AVX2 -ipo -O3 -no-prec-div -parallel
-opt-prefetch -auto-p32

445.gobmk: -xCORE-AVX2(pass 2) -prof-gen(pass 1) -prof-use(pass 2)
-ansi-alias

456.hmmcr: basepeak = yes

458.sjeng: -xCORE-AVX2(pass 2) -prof-gen(pass 1) -ipo(pass 2)
-O3(pass 2) -no-prec-div(pass 2) -prof-use(pass 2)
-unroll4

462.libquantum: basepeak = yes

464.h264ref: basepeak = yes

C++ benchmarks:

471.omnetpp: -xCORE-AVX2(pass 2) -prof-gen(pass 1) -ipo(pass 2)
-O3(pass 2) -no-prec-div(pass 2) -prof-use(pass 2)
-opt-ra-region-strategy=block -ansi-alias
-Wl,-z,muldefs -L/sh -lsmartheap

473.astar: -xCORE-AVX2 -ipo -O3 -no-prec-div -opt-prefetch
-auto-p32 -Wl,-z,muldefs -L/sh -lsmartheap64

483.xalancbmk: basepeak = yes

Peak Other Flags

C benchmarks:

403.gcc: -Dalloca=_alloca

The flags files that were used to format this result can be browsed at

<http://www.spec.org/cpu2006/flags/Intel-ic15.0-official-linux64.html>

<http://www.spec.org/cpu2006/flags/Huawei-Platform-Settings-HASWELL-V1.4.html>

You can also download the XML flags sources by saving the following links:

<http://www.spec.org/cpu2006/flags/Intel-ic15.0-official-linux64.xml>

<http://www.spec.org/cpu2006/flags/Huawei-Platform-Settings-HASWELL-V1.4.xml>



SPEC CINT2006 Result

Copyright 2006-2015 Standard Performance Evaluation Corporation

Huawei

SPECint2006 = 56.3

Huawei XH622 V3 (Intel Xeon E5-2658A v3)

SPECint_base2006 = 54.2

CPU2006 license: 3175

Test sponsor: Huawei

Tested by: Huawei

Test date: Mar-2015

Hardware Availability: Mar-2015

Software Availability: Sep-2014

SPEC and SPECint are registered trademarks of the Standard Performance Evaluation Corporation. All other brand and product names appearing in this result are trademarks or registered trademarks of their respective holders.

For questions about this result, please contact the tester.
For other inquiries, please contact webmaster@spec.org.

Tested with SPEC CPU2006 v1.2.
Report generated on Thu Jul 16 11:50:04 2015 by SPEC CPU2006 PS/PDF formatter v6932.
Originally published on 21 April 2015.