



SPEC® CINT2006 Result

Copyright 2006-2015 Standard Performance Evaluation Corporation

Huawei

SPECint®2006 = **65.4**

Huawei RH5885H V3 (Intel Xeon E7-8891 v3)

SPECint_base2006 = **63.2**

CPU2006 license: 3175

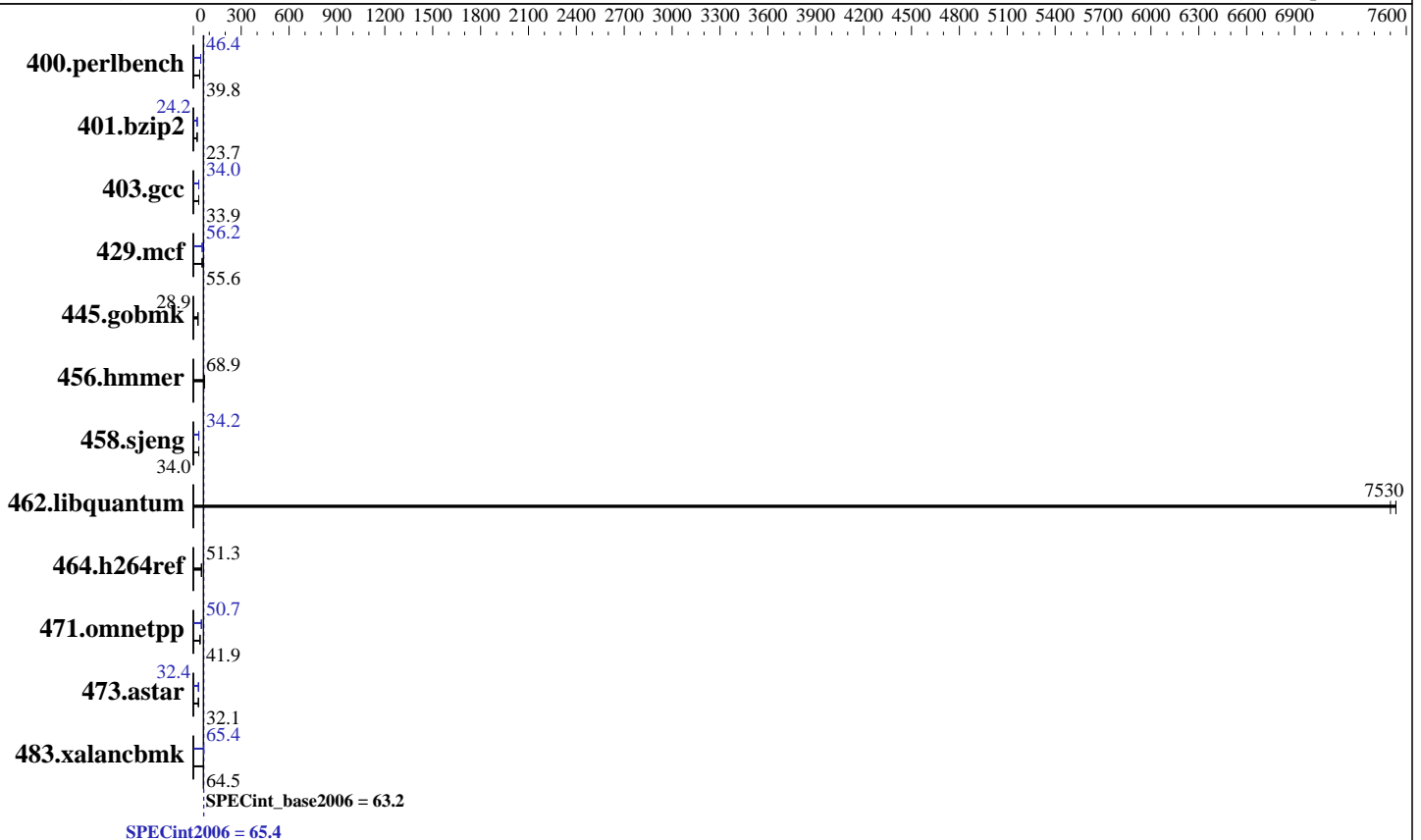
Test sponsor: Huawei

Tested by: Huawei

Test date: May-2015

Hardware Availability: May-2015

Software Availability: Sep-2014



Hardware

CPU Name: Intel Xeon E7-8891 v3
 CPU Characteristics: Intel Turbo Boost Technology up to 3.50 GHz
 CPU MHz: 2800
 FPU: Integrated
 CPU(s) enabled: 40 cores, 4 chips, 10 cores/chip
 CPU(s) orderable: 2,4 chips
 Primary Cache: 32 KB I + 32 KB D on chip per core
 Secondary Cache: 256 KB I+D on chip per core
 L3 Cache: 45 MB I+D on chip per chip
 Other Cache: None
 Memory: 1 TB (64 x 16 GB 2Rx4 PC4-2133P-R, running at 1600 MHz)
 Disk Subsystem: 2 x 300 GB SAS, 10K RPM
 Other Hardware: None

Software

Operating System: Red Hat Enterprise Linux Server release 7.0 (Maipo)
 3.10.0-123.el7.x86_64
 Compiler: C/C++: Version 15.0.0.090 of Intel C++ Studio XE for Linux
 Auto Parallel: Yes
 File System: xfs
 System State: Run level 3 (multi-user)
 Base Pointers: 32/64-bit
 Peak Pointers: 32/64-bit
 Other Software: Microquill SmartHeap V10.0



SPEC CINT2006 Result

Copyright 2006-2015 Standard Performance Evaluation Corporation

Huawei

SPECint2006 = **65.4**

Huawei RH5885H V3 (Intel Xeon E7-8891 v3)

SPECint_base2006 = **63.2**

CPU2006 license: 3175
Test sponsor: Huawei
Tested by: Huawei

Test date: May-2015
Hardware Availability: May-2015
Software Availability: Sep-2014

Results Table

Benchmark	Base						Peak					
	Seconds	Ratio	Seconds	Ratio	Seconds	Ratio	Seconds	Ratio	Seconds	Ratio	Seconds	Ratio
400.perlbench	245	39.8	246	39.8	245	39.9	211	46.4	211	46.4	211	46.3
401.bzip2	406	23.7	406	23.7	408	23.6	399	24.2	399	24.2	399	24.2
403.gcc	238	33.9	238	33.9	238	33.8	237	34.0	237	33.9	237	34.0
429.mcf	164	55.6	164	55.6	163	55.8	162	56.2	162	56.4	164	55.6
445.gobmk	363	28.9	362	28.9	362	29.0	363	28.9	362	28.9	362	29.0
456.hmmr	135	68.9	135	69.0	136	68.8	135	68.9	135	69.0	136	68.8
458.sjeng	355	34.0	356	34.0	355	34.1	353	34.3	354	34.2	354	34.2
462.libquantum	2.75	7530	2.75	7540	2.76	7500	2.75	7530	2.75	7540	2.76	7500
464.h264ref	431	51.3	431	51.3	435	50.9	431	51.3	431	51.3	435	50.9
471.omnetpp	148	42.1	150	41.8	149	41.9	123	50.7	123	50.9	123	50.6
473.astar	219	32.1	218	32.1	218	32.2	217	32.4	217	32.4	217	32.3
483.xalancbmk	107	64.6	108	64.2	107	64.5	106	65.4	106	65.4	105	65.4

Results appear in the order in which they were run. Bold underlined text indicates a median measurement.

Submit Notes

The config file option 'submit' was used.

Operating System Notes

Stack size set to unlimited using "ulimit -s unlimited"

Platform Notes

BIOS configuration:
Set Power Efficiency Mode to Performance
Set Lock_step to disabled
Baseboard Management Controller used to adjust the fan speed to 100%
Set DRAM Maintenance to Manual
Set DRAM Maintenance Mode to pTRR
Set Patrol Scrub to Enabled
Set Hyper Threading to disabled
Sysinfo program /spec/config/sysinfo.rev6914
\$Rev: 6914 \$ \$Date:: 2014-06-25 #\$ e3fbb8667b5a285932ceab81e28219e1
running on rh5885hv3 Mon May 18 05:49:05 2015

This section contains SUT (System Under Test) info as seen by some common utilities. To remove or add to this section, see: <http://www.spec.org/cpu2006/Docs/config.html#sysinfo>

From /proc/cpuinfo
model name : Intel(R) Xeon(R) CPU E7-8891 v3 @ 2.80GHz
4 "physical id"s (chips)

Continued on next page



SPEC CINT2006 Result

Copyright 2006-2015 Standard Performance Evaluation Corporation

Huawei

SPECint2006 = 65.4

Huawei RH5885H V3 (Intel Xeon E7-8891 v3)

SPECint_base2006 = 63.2

CPU2006 license: 3175

Test sponsor: Huawei

Tested by: Huawei

Test date: May-2015

Hardware Availability: May-2015

Software Availability: Sep-2014

Platform Notes (Continued)

40 "processors"
cores, siblings (Caution: counting these is hw and system dependent. The following excerpts from /proc/cpuinfo might not be reliable. Use with caution.)

```
cpu cores : 10
siblings  : 10
physical 0: cores 0 1 2 4 6 8 17 19 20 23
physical 1: cores 0 1 2 4 6 8 17 19 20 23
physical 2: cores 0 1 2 4 6 8 17 19 20 23
physical 3: cores 0 1 2 4 6 8 17 19 20 23
cache size : 46080 KB
```

From /proc/meminfo

```
MemTotal:      1056474292 kB
HugePages_Total: 0
Hugepagesize:   2048 kB
```

From /etc/*release* /etc/*version*

```
os-release:
NAME="Red Hat Enterprise Linux Server"
VERSION="7.0 (Maipo)"
ID="rhel"
ID_LIKE="fedora"
VERSION_ID="7.0"
PRETTY_NAME="Red Hat Enterprise Linux Server 7.0 (Maipo)"
ANSI_COLOR="0;31"
CPE_NAME="cpe:/o:redhat:enterprise_linux:7.0:GA:server"
redhat-release: Red Hat Enterprise Linux Server release 7.0 (Maipo)
system-release: Red Hat Enterprise Linux Server release 7.0 (Maipo)
system-release-cpe: cpe:/o:redhat:enterprise_linux:7.0:ga:server
```

uname -a:

```
Linux rh5885hv3 3.10.0-123.el7.x86_64 #1 SMP Mon May 5 11:16:57 EDT 2014
x86_64 x86_64 x86_64 GNU/Linux
```

run-level 3 May 18 05:43

SPEC is set to: /spec

```
Filesystem      Type      Size      Used Avail Use% Mounted on
/dev/mapper/rhel-root xfs      342G      20G  323G   6% /
```

Additional information from dmidecode:

Warning: Use caution when you interpret this section. The 'dmidecode' program reads system data which is "intended to allow hardware to be accurately determined", but the intent may not be met, as there are frequent changes to hardware, firmware, and the "DMTF SMBIOS" standard.

BIOS American Megatrends Inc. BLISV705 03/30/2015

Memory:

```
32x NO DIMM NO DIMM
64x Samsung M393A2G40DB0-CPB 16 GB 2 rank 2133 MHz, configured at 1600 MHz
```

Continued on next page



SPEC CINT2006 Result

Copyright 2006-2015 Standard Performance Evaluation Corporation

Huawei

SPECint2006 = 65.4

Huawei RH5885H V3 (Intel Xeon E7-8891 v3)

SPECint_base2006 = 63.2

CPU2006 license: 3175

Test date: May-2015

Test sponsor: Huawei

Hardware Availability: May-2015

Tested by: Huawei

Software Availability: Sep-2014

Platform Notes (Continued)

(End of data from sysinfo program)

Regarding the sysinfo display about the memory installed, the correct amount of memory is 1 TB and the dmidecode description should have two lines reading as:

32x NO DIMM NO DIMM

64x Samsung M393A2G40DB0-CPB 16 GB 2 rank 2133 MHz, configured at 1600 MHz

General Notes

Environment variables set by runspec before the start of the run:

KMP_AFFINITY = "granularity=fine,compact,1,0"

LD_LIBRARY_PATH = "/spec/libs/32:/spec/libs/64:/spec/sh"

OMP_NUM_THREADS = "40"

Binaries compiled on a system with 1x Core i5-4670K CPU + 16GB memory using RedHat EL 7.0

Transparent Huge Pages enabled with:

echo always > /sys/kernel/mm/transparent_hugepage/enabled

runspec command invoked through numactl i.e.:

numactl --interleave=all runspec <etc>

Base Compiler Invocation

C benchmarks:

icc -m64

C++ benchmarks:

icpc -m64

Base Portability Flags

400.perlbench: -DSPEC_CPU_LP64 -DSPEC_CPU_LINUX_X64

401.bzip2: -DSPEC_CPU_LP64

403.gcc: -DSPEC_CPU_LP64

429.mcf: -DSPEC_CPU_LP64

445.gobmk: -DSPEC_CPU_LP64

456.hmmer: -DSPEC_CPU_LP64

458.sjeng: -DSPEC_CPU_LP64

462.libquantum: -DSPEC_CPU_LP64 -DSPEC_CPU_LINUX

464.h264ref: -DSPEC_CPU_LP64

471.omnetpp: -DSPEC_CPU_LP64

473.astar: -DSPEC_CPU_LP64

483.xalanbmk: -DSPEC_CPU_LP64 -DSPEC_CPU_LINUX



SPEC CINT2006 Result

Copyright 2006-2015 Standard Performance Evaluation Corporation

Huawei

SPECint2006 = 65.4

Huawei RH5885H V3 (Intel Xeon E7-8891 v3)

SPECint_base2006 = 63.2

CPU2006 license: 3175
Test sponsor: Huawei
Tested by: Huawei

Test date: May-2015
Hardware Availability: May-2015
Software Availability: Sep-2014

Base Optimization Flags

C benchmarks:

-xCORE-AVX2 -ipo -O3 -no-prec-div -parallel -opt-prefetch -auto-p32

C++ benchmarks:

-xCORE-AVX2 -ipo -O3 -no-prec-div -opt-prefetch -auto-p32
-Wl,-z,muldefs -L/sh -lsmartheap64

Base Other Flags

C benchmarks:

403.gcc: -Dalloca=_alloca

Peak Compiler Invocation

C benchmarks (except as noted below):

icc -m64

400.perlbench: icc -m32 -L/opt/intel/composer_xe_2015/lib/ia32

C++ benchmarks (except as noted below):

icpc -m32 -L/opt/intel/composer_xe_2015/lib/ia32

473.astar: icpc -m64

Peak Portability Flags

400.perlbench: -DSPEC_CPU_LINUX_IA32
401.bzip2: -DSPEC_CPU_LP64
403.gcc: -DSPEC_CPU_LP64
429.mcf: -DSPEC_CPU_LP64
445.gobmk: -DSPEC_CPU_LP64
456.hmmer: -DSPEC_CPU_LP64
458.sjeng: -DSPEC_CPU_LP64
462.libquantum: -DSPEC_CPU_LP64 -DSPEC_CPU_LINUX
464.h264ref: -DSPEC_CPU_LP64
473.astar: -DSPEC_CPU_LP64
483.xalancbmk: -DSPEC_CPU_LINUX



SPEC CINT2006 Result

Copyright 2006-2015 Standard Performance Evaluation Corporation

Huawei

SPECint2006 = 65.4

Huawei RH5885H V3 (Intel Xeon E7-8891 v3)

SPECint_base2006 = 63.2

CPU2006 license: 3175
Test sponsor: Huawei
Tested by: Huawei

Test date: May-2015
Hardware Availability: May-2015
Software Availability: Sep-2014

Peak Optimization Flags

C benchmarks:

400.perlbench: -xCORE-AVX2(pass 2) -prof-gen(pass 1) -ipo(pass 2)
-O3(pass 2) -no-prec-div(pass 2) -prof-use(pass 2)
-opt-prefetch -ansi-alias

401.bzip2: -xCORE-AVX2(pass 2) -prof-gen(pass 1) -ipo(pass 2)
-O3(pass 2) -no-prec-div -prof-use(pass 2) -auto-ilp32
-opt-prefetch -ansi-alias

403.gcc: -xCORE-AVX2 -ipo -O3 -no-prec-div -inline-calloc
-opt-malloc-options=3 -auto-ilp32

429.mcf: -xCORE-AVX2 -ipo -O3 -no-prec-div -parallel
-opt-prefetch -auto-p32

445.gobmk: basepeak = yes

456.hmmer: basepeak = yes

458.sjeng: -xCORE-AVX2(pass 2) -prof-gen(pass 1) -ipo(pass 2)
-O3(pass 2) -no-prec-div(pass 2) -prof-use(pass 2)
-unroll4

462.libquantum: basepeak = yes

464.h264ref: basepeak = yes

C++ benchmarks:

471.omnetpp: -xCORE-AVX2(pass 2) -prof-gen(pass 1) -ipo(pass 2)
-O3(pass 2) -no-prec-div(pass 2) -prof-use(pass 2)
-opt-ra-region-strategy=block -ansi-alias
-Wl,-z,muldefs -L/sh -lsmartheap

473.astar: -xCORE-AVX2 -ipo -O3 -no-prec-div -opt-prefetch
-auto-p32 -Wl,-z,muldefs -L/sh -lsmartheap64

483.xalancbmk: -xCORE-AVX2 -ipo -O3 -no-prec-div -opt-prefetch
-ansi-alias -Wl,-z,muldefs -L/sh -lsmartheap

Peak Other Flags

C benchmarks:

403.gcc: -Dalloca=_alloca



SPEC CINT2006 Result

Copyright 2006-2015 Standard Performance Evaluation Corporation

Huawei

SPECint2006 = 65.4

Huawei RH5885H V3 (Intel Xeon E7-8891 v3)

SPECint_base2006 = 63.2

CPU2006 license: 3175

Test sponsor: Huawei

Tested by: Huawei

Test date: May-2015

Hardware Availability: May-2015

Software Availability: Sep-2014

The flags files that were used to format this result can be browsed at

<http://www.spec.org/cpu2006/flags/Intel-ic15.0-official-linux64.html>

<http://www.spec.org/cpu2006/flags/Huawei-Platform-Settings-V1.0-HSW-RevG.html>

You can also download the XML flags sources by saving the following links:

<http://www.spec.org/cpu2006/flags/Intel-ic15.0-official-linux64.xml>

<http://www.spec.org/cpu2006/flags/Huawei-Platform-Settings-V1.0-HSW-RevG.xml>

SPEC and SPECint are registered trademarks of the Standard Performance Evaluation Corporation. All other brand and product names appearing in this result are trademarks or registered trademarks of their respective holders.

For questions about this result, please contact the tester.
For other inquiries, please contact webmaster@spec.org.

Tested with SPEC CPU2006 v1.2.
Report generated on Tue Jun 2 13:48:32 2015 by SPEC CPU2006 PS/PDF formatter v6932.
Originally published on 2 June 2015.