



SPEC® CINT2006 Result

Copyright 2006-2015 Standard Performance Evaluation Corporation

Fujitsu

PRIMERGY RX4770 M2, Intel Xeon E7-4820 v3, 1.90 GHz

SPECint®_rate2006 = 1190

SPECint_rate_base2006 = 1150

CPU2006 license: 19

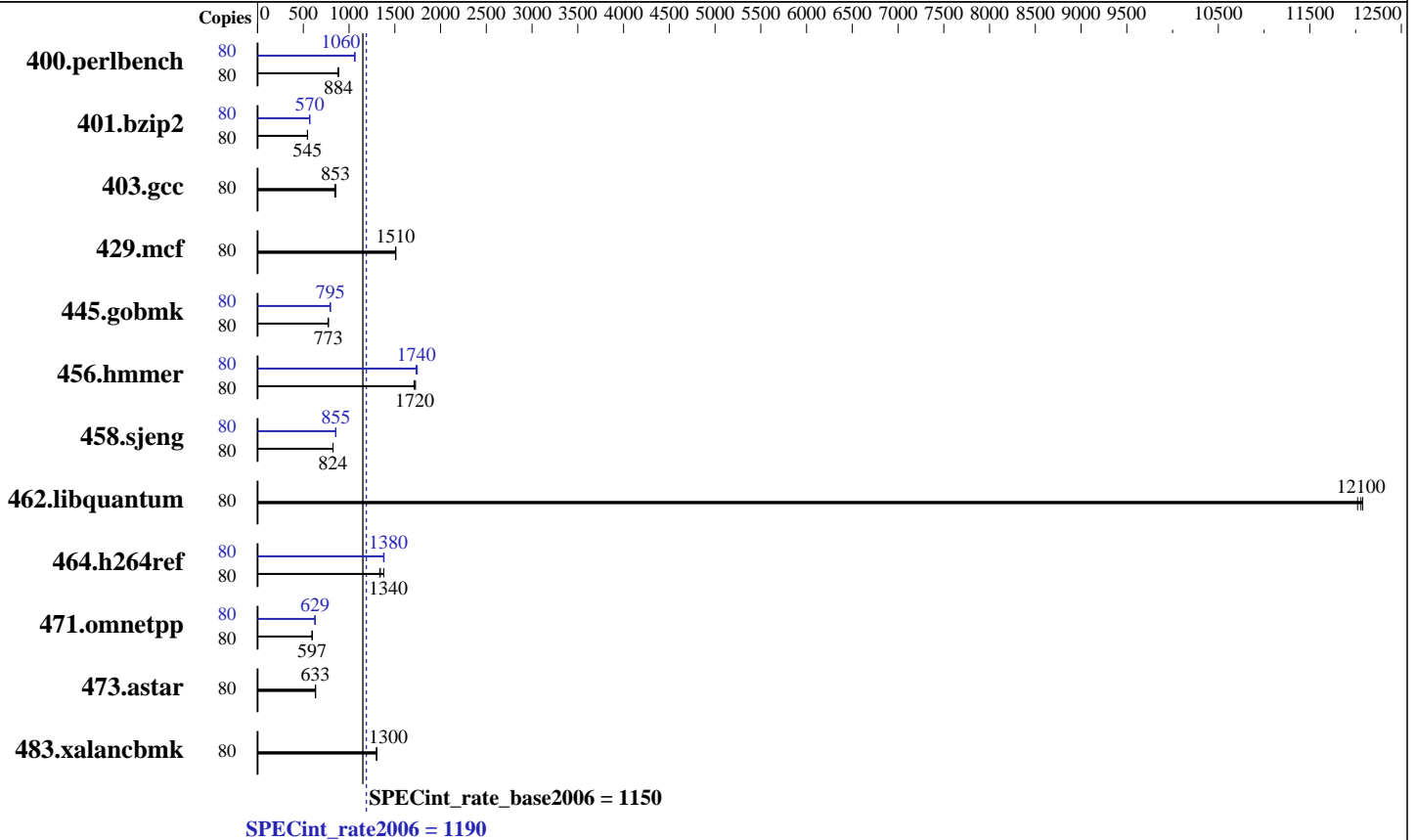
Test sponsor: Fujitsu

Tested by: Fujitsu

Test date: Apr-2015

Hardware Availability: May-2015

Software Availability: Oct-2014



Hardware

CPU Name: Intel Xeon E7-4820 v3
 CPU Characteristics:
 CPU MHz: 1900
 FPU: Integrated
 CPU(s) enabled: 40 cores, 4 chips, 10 cores/chip, 2 threads/core
 CPU(s) orderable: 2,4 chips
 Primary Cache: 32 KB I + 32 KB D on chip per core
 Secondary Cache: 256 KB I+D on chip per core
 L3 Cache: 25 MB I+D on chip per chip
 Other Cache: None
 Memory: 512 GB (32 x 16 GB 2Rx4 PC4-2133P-R, running at 1333 MHz)
 Disk Subsystem: 1 x SATA, 600 GB, 10000 RPM
 Other Hardware: None

Software

Operating System: Red Hat Enterprise Linux Server release 6.6 (Santiago)
 2.6.32-504.el6.x86_64
 Compiler: C/C++: Version 14.0.0.080 of Intel C++ Studio XE for Linux
 Auto Parallel: No
 File System: ext4
 System State: Run level 3 (multi-user)
 Base Pointers: 32-bit
 Peak Pointers: 32/64-bit
 Other Software: Microquill SmartHeap V10.0



SPEC CINT2006 Result

Copyright 2006-2015 Standard Performance Evaluation Corporation

Fujitsu

PRIMERGY RX4770 M2, Intel Xeon E7-4820 v3, 1.90 GHz

SPECint_rate2006 = 1190

SPECint_rate_base2006 = 1150

CPU2006 license: 19
Test sponsor: Fujitsu
Tested by: Fujitsu

Test date: Apr-2015
Hardware Availability: May-2015
Software Availability: Oct-2014

Results Table

Benchmark	Base							Peak						
	Copies	Seconds	Ratio	Seconds	Ratio	Seconds	Ratio	Copies	Seconds	Ratio	Seconds	Ratio	Seconds	Ratio
400.perlbench	80	884	884	888	880	883	885	80	734	1060	735	1060	738	1060
401.bzip2	80	1416	545	1416	545	1412	547	80	1353	570	1355	570	1355	570
403.gcc	80	755	853	755	853	763	844	80	755	853	755	853	763	844
429.mcf	80	483	1510	484	1510	483	1510	80	483	1510	484	1510	483	1510
445.gobmk	80	1083	775	1086	773	1087	772	80	1056	795	1055	796	1055	795
456.hammer	80	432	1730	436	1710	435	1720	80	431	1730	429	1740	428	1750
458.sjeng	80	1173	826	1175	824	1174	824	80	1132	855	1133	855	1133	854
462.libquantum	80	138	12000	137	12100	137	12100	80	138	12000	137	12100	137	12100
464.h264ref	80	1283	1380	1320	1340	1326	1340	80	1286	1380	1281	1380	1283	1380
471.omnetpp	80	837	597	837	597	839	596	80	795	629	794	629	797	627
473.astar	80	886	634	887	633	890	631	80	886	634	887	633	890	631
483.xalancbmk	80	424	1300	424	1300	424	1300	80	424	1300	424	1300	424	1300

Results appear in the order in which they were run. Bold underlined text indicates a median measurement.

Submit Notes

The numactl mechanism was used to bind copies to processors. The config file option 'submit' was used to generate numactl commands to bind each copy to a specific processor. For details, please see the config file.

Operating System Notes

Stack size set to unlimited using "ulimit -s unlimited"

Platform Notes

BIOS configuration:
Energy Performance = Performance

General Notes

Environment variables set by runspec before the start of the run:
LD_LIBRARY_PATH = "/home/SPECcpu2006/libs/32:/home/SPECcpu2006/libs/64:/home/SPECcpu2006/sh"

Binaries compiled on a system with 1x Core i7-860 CPU + 8GB memory using RedHat EL 6.4
Transparent Huge Pages enabled with:
echo always > /sys/kernel/mm/redhat_transparent_hugepage/enabled
Filesystem page cache cleared with:
echo 1> /proc/sys/vm/drop_caches
runspec command invoked through numactl i.e.:
numactl --interleave=all runspec <etc>

Continued on next page



SPEC CINT2006 Result

Copyright 2006-2015 Standard Performance Evaluation Corporation

Fujitsu

PRIMERGY RX4770 M2, Intel Xeon E7-4820 v3, 1.90 GHz

SPECint_rate2006 = 1190

SPECint_rate_base2006 = 1150

CPU2006 license: 19
Test sponsor: Fujitsu
Tested by: Fujitsu

Test date: Apr-2015
Hardware Availability: May-2015
Software Availability: Oct-2014

General Notes (Continued)

For information about Fujitsu please visit: <http://www.fujitsu.com>

Base Compiler Invocation

C benchmarks:
icc -m32

C++ benchmarks:
icpc -m32

Base Portability Flags

400.perlbench: -DSPEC_CPU_LINUX_IA32
462.libquantum: -DSPEC_CPU_LINUX
483.xalancbmk: -DSPEC_CPU_LINUX

Base Optimization Flags

C benchmarks:
-xCORE-AVX2 -ipo -O3 -no-prec-div -opt-prefetch
-opt-mem-layout-trans=3

C++ benchmarks:
-xCORE-AVX2 -ipo -O3 -no-prec-div -opt-prefetch
-opt-mem-layout-trans=3 -Wl,-z,muldefs -L/sh -lsmartheap

Base Other Flags

C benchmarks:
403.gcc: -Dalloca=_alloca

Peak Compiler Invocation

C benchmarks (except as noted below):
icc -m32

400.perlbench: icc -m64

401.bzip2: icc -m64

Continued on next page



SPEC CINT2006 Result

Copyright 2006-2015 Standard Performance Evaluation Corporation

Fujitsu

PRIMERGY RX4770 M2, Intel Xeon E7-4820 v3, 1.90 GHz

SPECint_rate2006 = 1190

SPECint_rate_base2006 = 1150

CPU2006 license: 19
Test sponsor: Fujitsu
Tested by: Fujitsu

Test date: Apr-2015
Hardware Availability: May-2015
Software Availability: Oct-2014

Peak Compiler Invocation (Continued)

456.hmmer: `icc -m64`

458.sjeng: `icc -m64`

C++ benchmarks:
`icpc -m32`

Peak Portability Flags

400.perlbench: `-DSPEC_CPU_LP64 -DSPEC_CPU_LINUX_X64`
401.bzip2: `-DSPEC_CPU_LP64`
456.hmmer: `-DSPEC_CPU_LP64`
458.sjeng: `-DSPEC_CPU_LP64`
462.libquantum: `-DSPEC_CPU_LINUX`
483.xalancbmk: `-DSPEC_CPU_LINUX`

Peak Optimization Flags

C benchmarks:

400.perlbench: `-xCORE-AVX2(pass 2) -prof-gen(pass 1) -ipo(pass 2) -O3(pass 2) -no-prec-div(pass 2) -prof-use(pass 2) -auto-ilp32`

401.bzip2: `-xCORE-AVX2(pass 2) -prof-gen(pass 1) -ipo(pass 2) -O3(pass 2) -no-prec-div(pass 2) -prof-use(pass 2) -opt-prefetch -auto-ilp32 -ansi-alias`

403.gcc: `basepeak = yes`

429.mcf: `basepeak = yes`

445.gobmk: `-xCORE-AVX2(pass 2) -prof-gen(pass 1) -prof-use(pass 2) -ansi-alias -opt-mem-layout-trans=3`

456.hmmer: `-xCORE-AVX2 -ipo -O3 -no-prec-div -unroll2 -auto-ilp32`

458.sjeng: `-xCORE-AVX2(pass 2) -prof-gen(pass 1) -ipo(pass 2) -O3(pass 2) -no-prec-div(pass 2) -prof-use(pass 2) -unroll4 -auto-ilp32`

462.libquantum: `basepeak = yes`

464.h264ref: `-xCORE-AVX2(pass 2) -prof-gen(pass 1) -ipo(pass 2) -O3(pass 2) -no-prec-div(pass 2) -prof-use(pass 2) -unroll2 -ansi-alias`

Continued on next page



SPEC CINT2006 Result

Copyright 2006-2015 Standard Performance Evaluation Corporation

Fujitsu

PRIMERGY RX4770 M2, Intel Xeon E7-4820 v3, 1.90 GHz

SPECint_rate2006 = 1190

SPECint_rate_base2006 = 1150

CPU2006 license: 19
Test sponsor: Fujitsu
Tested by: Fujitsu

Test date: Apr-2015
Hardware Availability: May-2015
Software Availability: Oct-2014

Peak Optimization Flags (Continued)

C++ benchmarks:

471.omnetpp: -xCORE-AVX2(pass 2) -prof-gen(pass 1) -ipo(pass 2)
-O3(pass 2) -no-prec-div(pass 2) -prof-use(pass 2)
-ansi-alias -opt-ra-region-strategy=block -Wl,-z,muldefs
-L/sh -lsmartheap

473.astar: basepeak = yes

483.xalancbmk: basepeak = yes

Peak Other Flags

C benchmarks:

403.gcc: -Dalloca=_alloca

The flags files that were used to format this result can be browsed at

<http://www.spec.org/cpu2006/flags/Fujitsu-Platform-Settings-V1.2-HSW-RevA.html>
<http://www.spec.org/cpu2006/flags/Intel-ic14.0-official-linux64-revB.html>

You can also download the XML flags sources by saving the following links:

<http://www.spec.org/cpu2006/flags/Fujitsu-Platform-Settings-V1.2-HSW-RevA.xml>
<http://www.spec.org/cpu2006/flags/Intel-ic14.0-official-linux64-revB.xml>

SPEC and SPECint are registered trademarks of the Standard Performance Evaluation Corporation. All other brand and product names appearing in this result are trademarks or registered trademarks of their respective holders.

For questions about this result, please contact the tester.
For other inquiries, please contact webmaster@spec.org.

Tested with SPEC CPU2006 v1.2.
Report generated on Wed Jun 17 10:49:11 2015 by SPEC CPU2006 PS/PDF formatter v6932.
Originally published on 16 June 2015.