



SPEC® CINT2006 Result

Copyright 2006-2015 Standard Performance Evaluation Corporation

Fujitsu

PRIMERGY RX4770 M2, Intel Xeon E7-8880 v3, 2.30 GHz

SPECint®_rate2006 = 2650

SPECint_rate_base2006 = 2580

CPU2006 license: 19

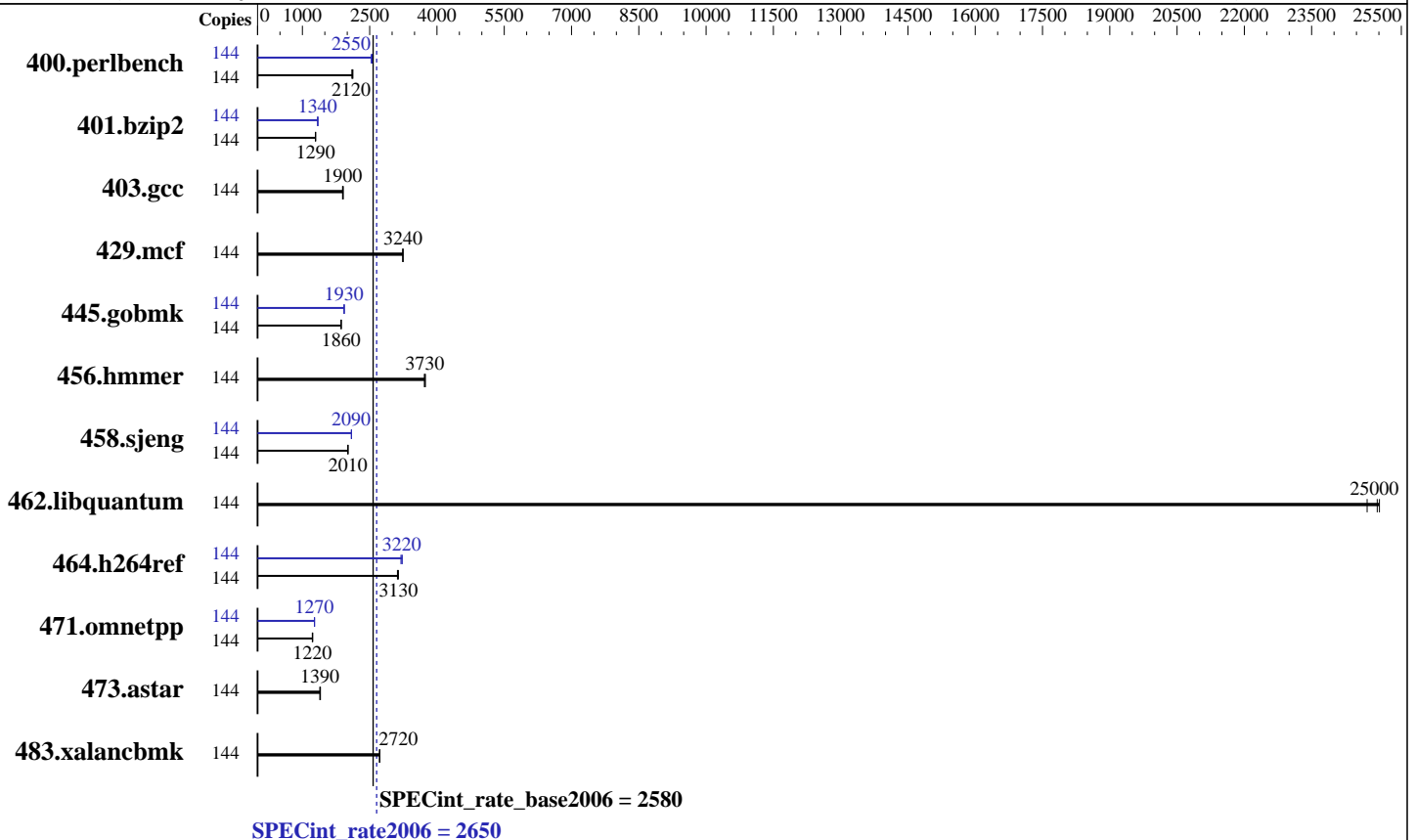
Test sponsor: Fujitsu

Tested by: Fujitsu

Test date: Apr-2015

Hardware Availability: May-2015

Software Availability: Oct-2014



Hardware

CPU Name: Intel Xeon E7-8880 v3
 CPU Characteristics: Intel Turbo Boost Technology up to 3.10 GHz
 CPU MHz: 2300
 FPU: Integrated
 CPU(s) enabled: 72 cores, 4 chips, 18 cores/chip, 2 threads/core
 CPU(s) orderable: 2,4 chips
 Primary Cache: 32 KB I + 32 KB D on chip per core
 Secondary Cache: 256 KB I+D on chip per core
 L3 Cache: 45 MB I+D on chip per chip
 Other Cache: None
 Memory: 512 GB (32 x 16 GB 2Rx4 PC4-2133P-R, running at 1600 MHz)
 Disk Subsystem: 1 x SATA, 600 GB, 10000 RPM
 Other Hardware: None

Software

Operating System: Red Hat Enterprise Linux Server release 6.6 (Santiago)
 2.6.32-504.el6.x86_64
 Compiler: C/C++: Version 14.0.0.080 of Intel C++ Studio XE for Linux
 Auto Parallel: No
 File System: ext4
 System State: Run level 3 (multi-user)
 Base Pointers: 32-bit
 Peak Pointers: 32/64-bit
 Other Software: Microquill SmartHeap V10.0



SPEC CINT2006 Result

Copyright 2006-2015 Standard Performance Evaluation Corporation

Fujitsu

PRIMERGY RX4770 M2, Intel Xeon E7-8880 v3, 2.30 GHz

SPECint_rate2006 = 2650

SPECint_rate_base2006 = 2580

CPU2006 license: 19
Test sponsor: Fujitsu
Tested by: Fujitsu

Test date: Apr-2015
Hardware Availability: May-2015
Software Availability: Oct-2014

Results Table

Benchmark	Base							Peak						
	Copies	Seconds	Ratio	Seconds	Ratio	Seconds	Ratio	Copies	Seconds	Ratio	Seconds	Ratio	Seconds	Ratio
400.perlbench	144	664	2120	662	2120	669	2100	144	551	2550	555	2530	551	2550
401.bzip2	144	1078	1290	1075	1290	1073	1300	144	1037	1340	1033	1350	1036	1340
403.gcc	144	606	1910	612	1900	610	1900	144	606	1910	612	1900	610	1900
429.mcf	144	405	3240	406	3240	405	3240	144	405	3240	406	3240	405	3240
445.gobmk	144	811	1860	811	1860	810	1860	144	783	1930	782	1930	782	1930
456.hammer	144	360	3730	359	3740	361	3720	144	360	3730	359	3740	361	3720
458.sjeng	144	865	2010	866	2010	864	2020	144	833	2090	833	2090	832	2090
462.libquantum	144	120	25000	119	25000	121	24700	144	120	25000	119	25000	121	24700
464.h264ref	144	1015	3140	1019	3130	1022	3120	144	991	3220	988	3220	997	3200
471.omnetpp	144	737	1220	731	1230	735	1220	144	708	1270	709	1270	709	1270
473.astar	144	726	1390	726	1390	721	1400	144	726	1390	726	1390	721	1400
483.xalancbmk	144	365	2720	366	2720	365	2720	144	365	2720	366	2720	365	2720

Results appear in the order in which they were run. Bold underlined text indicates a median measurement.

Submit Notes

The numactl mechanism was used to bind copies to processors. The config file option 'submit' was used to generate numactl commands to bind each copy to a specific processor. For details, please see the config file.

Operating System Notes

Stack size set to unlimited using "ulimit -s unlimited"

Platform Notes

BIOS configuration:
Energy Performance = Performance

General Notes

Environment variables set by runspec before the start of the run:
LD_LIBRARY_PATH = "/home/SPECcpu2006/libs/32:/home/SPECcpu2006/libs/64:/home/SPECcpu2006/sh"

Binaries compiled on a system with 1x Core i7-860 CPU + 8GB memory using RedHat EL 6.4
Transparent Huge Pages enabled with:
echo always > /sys/kernel/mm/redhat_transparent_hugepage/enabled
Filesystem page cache cleared with:
echo 1> /proc/sys/vm/drop_caches
runspec command invoked through numactl i.e.:
numactl --interleave=all runspec <etc>

Continued on next page



SPEC CINT2006 Result

Copyright 2006-2015 Standard Performance Evaluation Corporation

Fujitsu

PRIMERGY RX4770 M2, Intel Xeon E7-8880 v3, 2.30 GHz

SPECint_rate2006 = 2650

SPECint_rate_base2006 = 2580

CPU2006 license: 19
Test sponsor: Fujitsu
Tested by: Fujitsu

Test date: Apr-2015
Hardware Availability: May-2015
Software Availability: Oct-2014

General Notes (Continued)

For information about Fujitsu please visit: <http://www.fujitsu.com>

Base Compiler Invocation

C benchmarks:
icc -m32

C++ benchmarks:
icpc -m32

Base Portability Flags

400.perlbench: -DSPEC_CPU_LINUX_IA32
462.libquantum: -DSPEC_CPU_LINUX
483.xalancbmk: -DSPEC_CPU_LINUX

Base Optimization Flags

C benchmarks:
-xCORE-AVX2 -ipo -O3 -no-prec-div -opt-prefetch
-opt-mem-layout-trans=3

C++ benchmarks:
-xCORE-AVX2 -ipo -O3 -no-prec-div -opt-prefetch
-opt-mem-layout-trans=3 -Wl,-z,muldefs -L/sh -lsmartheap

Base Other Flags

C benchmarks:
403.gcc: -Dalloca=_alloca

Peak Compiler Invocation

C benchmarks (except as noted below):
icc -m32

400.perlbench: icc -m64

401.bzip2: icc -m64

Continued on next page



SPEC CINT2006 Result

Copyright 2006-2015 Standard Performance Evaluation Corporation

Fujitsu

PRIMERGY RX4770 M2, Intel Xeon E7-8880 v3, 2.30 GHz

SPECint_rate2006 = 2650

SPECint_rate_base2006 = 2580

CPU2006 license: 19
Test sponsor: Fujitsu
Tested by: Fujitsu

Test date: Apr-2015
Hardware Availability: May-2015
Software Availability: Oct-2014

Peak Compiler Invocation (Continued)

458.sjeng: icc -m64

C++ benchmarks:
icpc -m32

Peak Portability Flags

400.perlbench: -DSPEC_CPU_LP64 -DSPEC_CPU_LINUX_X64
401.bzip2: -DSPEC_CPU_LP64
458.sjeng: -DSPEC_CPU_LP64
462.libquantum: -DSPEC_CPU_LINUX
483.xalancbmk: -DSPEC_CPU_LINUX

Peak Optimization Flags

C benchmarks:

400.perlbench: -xCORE-AVX2(pass 2) -prof-gen(pass 1) -ipo(pass 2)
-O3(pass 2) -no-prec-div(pass 2) -prof-use(pass 2)
-auto-ilp32

401.bzip2: -xCORE-AVX2(pass 2) -prof-gen(pass 1) -ipo(pass 2)
-O3(pass 2) -no-prec-div(pass 2) -prof-use(pass 2)
-opt-prefetch -auto-ilp32 -ansi-alias

403.gcc: basepeak = yes

429.mcf: basepeak = yes

445.gobmk: -xCORE-AVX2(pass 2) -prof-gen(pass 1) -prof-use(pass 2)
-ansi-alias -opt-mem-layout-trans=3

456.hmmer: basepeak = yes

458.sjeng: -xCORE-AVX2(pass 2) -prof-gen(pass 1) -ipo(pass 2)
-O3(pass 2) -no-prec-div(pass 2) -prof-use(pass 2)
-unroll4 -auto-ilp32

462.libquantum: basepeak = yes

464.h264ref: -xCORE-AVX2(pass 2) -prof-gen(pass 1) -ipo(pass 2)
-O3(pass 2) -no-prec-div(pass 2) -prof-use(pass 2)
-unroll2 -ansi-alias

C++ benchmarks:

Continued on next page



SPEC CINT2006 Result

Copyright 2006-2015 Standard Performance Evaluation Corporation

Fujitsu

PRIMERGY RX4770 M2, Intel Xeon E7-8880 v3, 2.30 GHz

SPECint_rate2006 = 2650

SPECint_rate_base2006 = 2580

CPU2006 license: 19
Test sponsor: Fujitsu
Tested by: Fujitsu

Test date: Apr-2015
Hardware Availability: May-2015
Software Availability: Oct-2014

Peak Optimization Flags (Continued)

471.omnetpp: -xCORE-AVX2(pass 2) -prof-gen(pass 1) -ipo(pass 2)
-O3(pass 2) -no-prec-div(pass 2) -prof-use(pass 2)
-ansi-alias -opt-ra-region-strategy=block -Wl,-z,muldefs
-L/sh -lsmartheap

473.aster: basepeak = yes

483.xalancbmk: basepeak = yes

Peak Other Flags

C benchmarks:

403.gcc: -Dalloca=_alloca

The flags files that were used to format this result can be browsed at

<http://www.spec.org/cpu2006/flags/Fujitsu-Platform-Settings-V1.2-HSW-RevA.html>
<http://www.spec.org/cpu2006/flags/Intel-ic14.0-official-linux64-revB.html>

You can also download the XML flags sources by saving the following links:

<http://www.spec.org/cpu2006/flags/Fujitsu-Platform-Settings-V1.2-HSW-RevA.xml>
<http://www.spec.org/cpu2006/flags/Intel-ic14.0-official-linux64-revB.xml>

SPEC and SPECint are registered trademarks of the Standard Performance Evaluation Corporation. All other brand and product names appearing in this result are trademarks or registered trademarks of their respective holders.

For questions about this result, please contact the tester.
For other inquiries, please contact webmaster@spec.org.

Tested with SPEC CPU2006 v1.2.
Report generated on Tue Aug 25 17:52:14 2015 by SPEC CPU2006 PS/PDF formatter v6932.
Originally published on 25 August 2015.