



# SPEC® CINT2006 Result

Copyright 2006-2016 Standard Performance Evaluation Corporation

## Fujitsu

PRIMERGY RX2560 M2, Intel Xeon E5-2697 v4, 2.30 GHz

SPECint®\_rate2006 = 1580

SPECint\_rate\_base2006 = 1520

CPU2006 license: 19

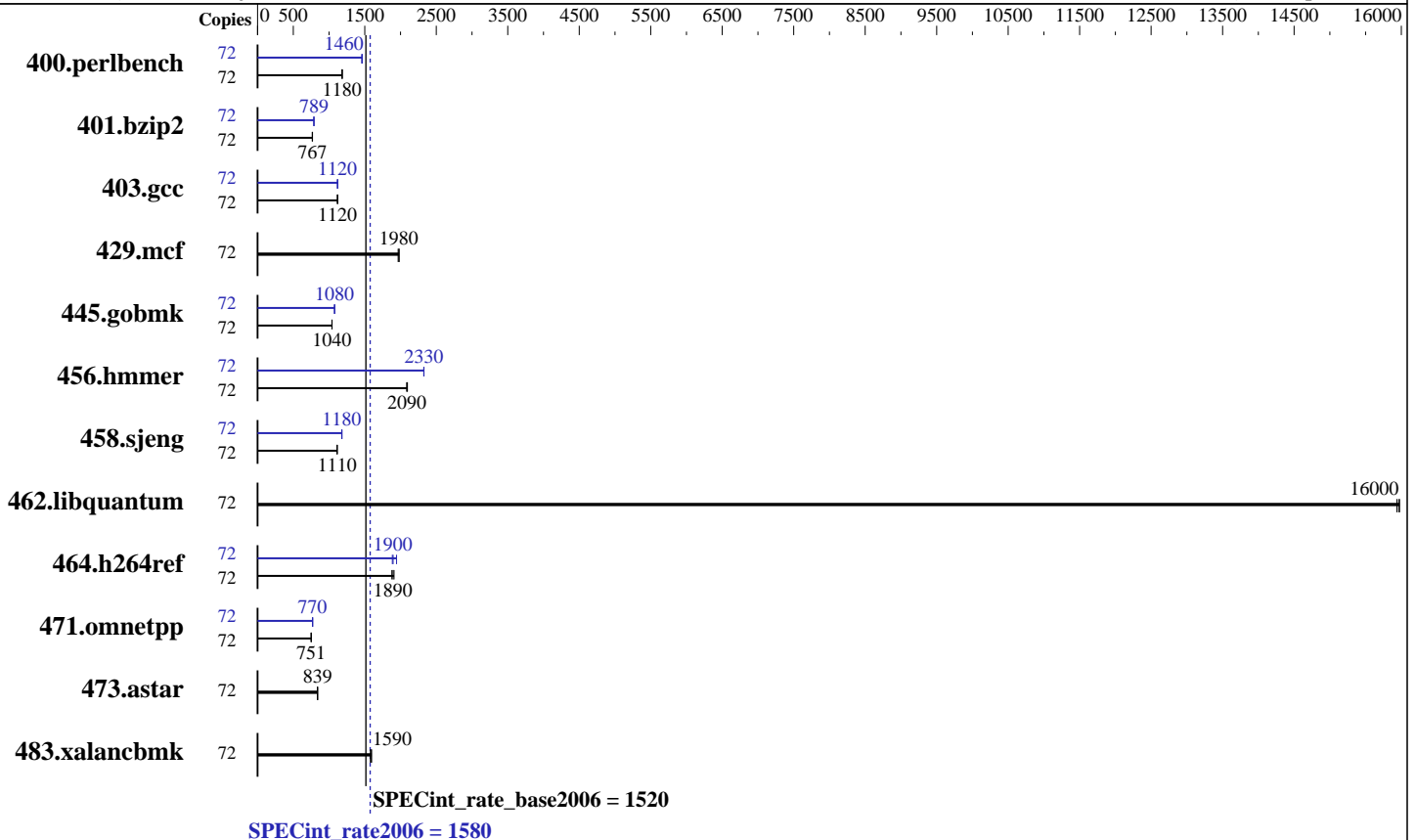
Test sponsor: Fujitsu

Tested by: Fujitsu

Test date: May-2016

Hardware Availability: Apr-2016

Software Availability: Sep-2015



### Hardware

CPU Name: Intel Xeon E5-2697 v4  
 CPU Characteristics: Intel Turbo Boost Technology up to 3.60 GHz  
 CPU MHz: 2300  
 FPU: Integrated  
 CPU(s) enabled: 36 cores, 2 chips, 18 cores/chip, 2 threads/core  
 CPU(s) orderable: 1,2 chip  
 Primary Cache: 32 KB I + 32 KB D on chip per core  
 Secondary Cache: 256 KB I+D on chip per core  
 L3 Cache: 45 MB I+D on chip per chip  
 Other Cache: None  
 Memory: 256 GB (16 x 16 GB 2Rx4 PC4-2400T-R)  
 Disk Subsystem: 1 x SATA, 500 GB, 7200 RPM  
 Other Hardware: None

### Software

Operating System: SUSE Linux Enterprise Server 12 SP1 (x86\_64)  
 Kernel 3.12.49-11-default  
 Compiler: C/C++; Version 16.0.0.101 of Intel C++ Studio XE for Linux  
 Auto Parallel: No  
 File System: xfs  
 System State: Run level 5 (multi-user)  
 Base Pointers: 32-bit  
 Peak Pointers: 32/64-bit  
 Other Software: Microquill SmartHeap V10.2



# SPEC CINT2006 Result

Copyright 2006-2016 Standard Performance Evaluation Corporation

## Fujitsu

PRIMERGY RX2560 M2, Intel Xeon E5-2697 v4, 2.30 GHz

SPECint\_rate2006 = 1580

SPECint\_rate\_base2006 = 1520

CPU2006 license: 19  
Test sponsor: Fujitsu  
Tested by: Fujitsu

Test date: May-2016  
Hardware Availability: Apr-2016  
Software Availability: Sep-2015

## Results Table

Benchmark	Base							Peak						
	Copies	Seconds	Ratio	Seconds	Ratio	Seconds	Ratio	Copies	Seconds	Ratio	Seconds	Ratio	Seconds	Ratio
400.perlbench	72	594	1180	595	1180	<u>594</u>	<u>1180</u>	72	<u>481</u>	<u>1460</u>	482	1460	480	1470
401.bzip2	72	908	765	904	769	<u>906</u>	<u>767</u>	72	882	788	881	789	<u>881</u>	<u>789</u>
403.gcc	72	<u>519</u>	<u>1120</u>	519	1120	517	1120	72	<u>518</u>	<u>1120</u>	517	1120	518	1120
429.mcf	72	334	1970	<u>332</u>	<u>1980</u>	332	1980	72	334	1970	<u>332</u>	<u>1980</u>	332	1980
445.gobmk	72	<u>725</u>	<u>1040</u>	726	1040	725	1040	72	701	1080	<u>701</u>	<u>1080</u>	701	1080
456.hammer	72	<u>322</u>	<u>2090</u>	320	2100	322	2090	72	289	2320	<u>289</u>	<u>2330</u>	289	2330
458.sjeng	72	<u>783</u>	<u>1110</u>	783	1110	783	1110	72	740	1180	<u>740</u>	<u>1180</u>	737	1180
462.libquantum	72	<u>93.5</u>	<u>16000</u>	93.6	15900	93.4	16000	72	<u>93.5</u>	<u>16000</u>	93.6	15900	93.4	16000
464.h264ref	72	848	1880	835	1910	<u>841</u>	<u>1890</u>	72	819	1940	<u>840</u>	<u>1900</u>	845	1890
471.omnetpp	72	601	749	598	752	<u>599</u>	<u>751</u>	72	585	770	<u>584</u>	<u>770</u>	584	771
473.astar	72	603	838	602	840	<u>602</u>	<u>839</u>	72	603	838	602	840	<u>602</u>	<u>839</u>
483.xalancbmk	72	315	1580	311	1600	<u>313</u>	<u>1590</u>	72	315	1580	311	1600	<u>313</u>	<u>1590</u>

Results appear in the order in which they were run. Bold underlined text indicates a median measurement.

## Submit Notes

The numactl mechanism was used to bind copies to processors. The config file option 'submit' was used to generate numactl commands to bind each copy to a specific processor. For details, please see the config file.

## Operating System Notes

Stack size set to unlimited using "ulimit -s unlimited"

## Platform Notes

BIOS configuration:  
Energy Performance = Performance  
Utilization Profile = Unbalanced  
QPI snoop mode: Cluster on Die  
COD Enable = Enabled, Early Snoop = Disabled, Home Snoop Dir OSB = Disabled  
CPU C1E Support = Disabled  
Sysinfo program /home/SPECcpu2006/config/sysinfo.rev6914  
\$Rev: 6914 \$ \$Date:: 2014-06-25 #\$ e3fbb8667b5a285932ceab81e28219e1  
running on RX2560M2 Tue May 10 15:07:12 2016

This section contains SUT (System Under Test) info as seen by some common utilities. To remove or add to this section, see:  
<http://www.spec.org/cpu2006/Docs/config.html#sysinfo>

From /proc/cpuinfo  
model name : Intel(R) Xeon(R) CPU E5-2697 v4 @ 2.30GHz  
2 "physical id"s (chips)

Continued on next page



# SPEC CINT2006 Result

Copyright 2006-2016 Standard Performance Evaluation Corporation

## Fujitsu

PRIMERGY RX2560 M2, Intel Xeon E5-2697 v4, 2.30 GHz

SPECint\_rate2006 = 1580

SPECint\_rate\_base2006 = 1520

CPU2006 license: 19  
Test sponsor: Fujitsu  
Tested by: Fujitsu

Test date: May-2016  
Hardware Availability: Apr-2016  
Software Availability: Sep-2015

### Platform Notes (Continued)

72 "processors"  
cores, siblings (Caution: counting these is hw and system dependent. The following excerpts from /proc/cpuinfo might not be reliable. Use with caution.)

```
cpu cores : 18
siblings  : 36
physical 0: cores 0 1 2 3 4 8 9 10 11 16 17 18 19 20 24 25 26 27
physical 1: cores 0 1 2 3 4 8 9 10 11 16 17 18 19 20 24 25 26 27
cache size : 23040 KB
```

```
From /proc/meminfo
MemTotal:      264312620 kB
HugePages_Total: 0
Hugepagesize:  2048 kB
```

```
/usr/bin/lsb_release -d
SUSE Linux Enterprise Server 12 SP1
```

```
From /etc/*release* /etc/*version*
SuSE-release:
SUSE Linux Enterprise Server 12 (x86_64)
VERSION = 12
PATCHLEVEL = 1
# This file is deprecated and will be removed in a future service pack or
release.
# Please check /etc/os-release for details about this release.
os-release:
NAME="SLES"
VERSION="12-SP1"
VERSION_ID="12.1"
PRETTY_NAME="SUSE Linux Enterprise Server 12 SP1"
ID="sles"
ANSI_COLOR="0;32"
CPE_NAME="cpe:/o:suse:sles:12:sp1"
```

```
uname -a:
Linux RX2560M2 3.12.49-11-default #1 SMP Wed Nov 11 20:52:43 UTC 2015
(8d714a0) x86_64 x86_64 x86_64 GNU/Linux
```

```
run-level 5 May 10 15:05
```

```
SPEC is set to: /home/SPECcpu2006
Filesystem      Type  Size  Used Avail Use% Mounted on
/dev/sda3       xfs   1.8T  3.5G  1.8T   1% /home
Additional information from dmidecode:
```

Warning: Use caution when you interpret this section. The 'dmidecode' program reads system data which is "intended to allow hardware to be accurately determined", but the intent may not be met, as there are frequent changes to hardware, firmware, and the "DMTF SMBIOS" standard.

BIOS FUJITSU // American Megatrends Inc. V5.0.0.11 R1.6.0 for D3289-B1x  
Continued on next page



# SPEC CINT2006 Result

Copyright 2006-2016 Standard Performance Evaluation Corporation

**Fujitsu**

PRIMERGY RX2560 M2, Intel Xeon E5-2697 v4, 2.30 GHz

**SPECint\_rate2006 = 1580**

**SPECint\_rate\_base2006 = 1520**

**CPU2006 license:** 19  
**Test sponsor:** Fujitsu  
**Tested by:** Fujitsu

**Test date:** May-2016  
**Hardware Availability:** Apr-2016  
**Software Availability:** Sep-2015

## Platform Notes (Continued)

03/11/2016

Memory:

16x Hynix Semiconductor HMA42GR7AFR4N-UH 16 GB 2 rank 2400 MHz  
8x NO DIMM NO DIMM

(End of data from sysinfo program)

## General Notes

Environment variables set by runspec before the start of the run:

LD\_LIBRARY\_PATH = "/home/SPECcpu2006/libs/32:/home/SPECcpu2006/libs/64:/home/SPECcpu2006/sh"

Binaries compiled on a system with 1x Intel Core i5-4670K CPU + 32GB memory using RedHat EL 7.1

Transparent Huge Pages enabled with:

echo always > /sys/kernel/mm/transparent\_hugepage/enabled

Filesystem page cache cleared with:

echo 1> /proc/sys/vm/drop\_caches

runspec command invoked through numactl i.e.:

numactl --interleave=all runspec <etc>

For information about Fujitsu please visit: <http://www.fujitsu.com>

## Base Compiler Invocation

C benchmarks:

icc -m32 -L/opt/intel/compilers\_and\_libraries\_2016/linux/compiler/lib/ia32\_lin

C++ benchmarks:

icpc -m32 -L/opt/intel/compilers\_and\_libraries\_2016/linux/compiler/lib/ia32\_lin

## Base Portability Flags

400.perlbench: -D\_FILE\_OFFSET\_BITS=64 -DSPEC\_CPU\_LINUX\_IA32  
401.bzip2: -D\_FILE\_OFFSET\_BITS=64  
403.gcc: -D\_FILE\_OFFSET\_BITS=64  
429.mcf: -D\_FILE\_OFFSET\_BITS=64  
445.gobmk: -D\_FILE\_OFFSET\_BITS=64  
456.hmmer: -D\_FILE\_OFFSET\_BITS=64  
458.sjeng: -D\_FILE\_OFFSET\_BITS=64  
462.libquantum: -D\_FILE\_OFFSET\_BITS=64 -DSPEC\_CPU\_LINUX  
464.h264ref: -D\_FILE\_OFFSET\_BITS=64  
471.omnetpp: -D\_FILE\_OFFSET\_BITS=64  
473.astar: -D\_FILE\_OFFSET\_BITS=64  
483.xalancbmk: -D\_FILE\_OFFSET\_BITS=64 -DSPEC\_CPU\_LINUX



# SPEC CINT2006 Result

Copyright 2006-2016 Standard Performance Evaluation Corporation

**Fujitsu**

PRIMERGY RX2560 M2, Intel Xeon E5-2697 v4, 2.30 GHz

**SPECint\_rate2006 = 1580**

**SPECint\_rate\_base2006 = 1520**

**CPU2006 license:** 19  
**Test sponsor:** Fujitsu  
**Tested by:** Fujitsu

**Test date:** May-2016  
**Hardware Availability:** Apr-2016  
**Software Availability:** Sep-2015

## Base Optimization Flags

C benchmarks:

-xCORE-AVX2 -ipo -O3 -no-prec-div -opt-prefetch  
-opt-mem-layout-trans=3

C++ benchmarks:

-xCORE-AVX2 -ipo -O3 -no-prec-div -opt-prefetch  
-opt-mem-layout-trans=3 -Wl,-z,muldefs -L/sh -lsmartheap

## Base Other Flags

C benchmarks:

403.gcc: -Dalloca=\_alloca

## Peak Compiler Invocation

C benchmarks (except as noted below):

icc -m32 -L/opt/intel/compilers\_and\_libraries\_2016/linux/compiler/lib/ia32\_lin

400.perlbench: icc -m64

401.bzip2: icc -m64

456.hmmer: icc -m64

458.sjeng: icc -m64

C++ benchmarks:

icpc -m32 -L/opt/intel/compilers\_and\_libraries\_2016/linux/compiler/lib/ia32\_lin

## Peak Portability Flags

400.perlbench: -D\_FILE\_OFFSET\_BITS=64 -DSPEC\_CPU\_LP64 -DSPEC\_CPU\_LINUX\_X64  
401.bzip2: -D\_FILE\_OFFSET\_BITS=64 -DSPEC\_CPU\_LP64  
403.gcc: -D\_FILE\_OFFSET\_BITS=64  
429.mcf: -D\_FILE\_OFFSET\_BITS=64  
445.gobmk: -D\_FILE\_OFFSET\_BITS=64  
456.hmmer: -D\_FILE\_OFFSET\_BITS=64 -DSPEC\_CPU\_LP64  
458.sjeng: -D\_FILE\_OFFSET\_BITS=64 -DSPEC\_CPU\_LP64  
462.libquantum: -D\_FILE\_OFFSET\_BITS=64 -DSPEC\_CPU\_LINUX  
464.h264ref: -D\_FILE\_OFFSET\_BITS=64  
471.omnetpp: -D\_FILE\_OFFSET\_BITS=64  
473.astar: -D\_FILE\_OFFSET\_BITS=64

Continued on next page



# SPEC CINT2006 Result

Copyright 2006-2016 Standard Performance Evaluation Corporation

**Fujitsu**

PRIMERGY RX2560 M2, Intel Xeon E5-2697 v4, 2.30 GHz

**SPECint\_rate2006 = 1580**

**SPECint\_rate\_base2006 = 1520**

**CPU2006 license:** 19  
**Test sponsor:** Fujitsu  
**Tested by:** Fujitsu

**Test date:** May-2016  
**Hardware Availability:** Apr-2016  
**Software Availability:** Sep-2015

## Peak Portability Flags (Continued)

483.xalanbmk: -D\_FILE\_OFFSET\_BITS=64 -DSPEC\_CPU\_LINUX

## Peak Optimization Flags

C benchmarks:

400.perlbench: -xCORE-AVX2(pass 2) -prof-gen:threadsafe(pass 1)  
-ipo(pass 2) -O3(pass 2) -no-prec-div(pass 2)  
-par-num-threads=1(pass 1) -prof-use(pass 2) -auto-ilp32

401.bzip2: -xCORE-AVX2(pass 2) -prof-gen:threadsafe(pass 1)  
-ipo(pass 2) -O3(pass 2) -no-prec-div(pass 2)  
-par-num-threads=1(pass 1) -prof-use(pass 2) -opt-prefetch  
-auto-ilp32 -ansi-alias

403.gcc: -xCORE-AVX2 -ipo -O3 -no-prec-div

429.mcf: basepeak = yes

445.gobmk: -xCORE-AVX2(pass 2) -prof-gen:threadsafe(pass 1)  
-prof-use(pass 2) -par-num-threads=1(pass 1) -ansi-alias  
-opt-mem-layout-trans=3

456.hmmr: -xCORE-AVX2 -ipo -O3 -no-prec-div -unroll2 -auto-ilp32

458.sjeng: -xCORE-AVX2(pass 2) -prof-gen:threadsafe(pass 1)  
-ipo(pass 2) -O3(pass 2) -no-prec-div(pass 2)  
-par-num-threads=1(pass 1) -prof-use(pass 2) -unroll4  
-auto-ilp32

462.libquantum: basepeak = yes

464.h264ref: -xCORE-AVX2(pass 2) -prof-gen:threadsafe(pass 1)  
-ipo(pass 2) -O3(pass 2) -no-prec-div(pass 2)  
-par-num-threads=1(pass 1) -prof-use(pass 2) -unroll2  
-ansi-alias

C++ benchmarks:

471.omnetpp: -xCORE-AVX2(pass 2) -prof-gen:threadsafe(pass 1)  
-ipo(pass 2) -O3(pass 2) -no-prec-div(pass 2)  
-par-num-threads=1(pass 1) -prof-use(pass 2) -ansi-alias  
-opt-ra-region-strategy=block -Wl,-z,muldefs  
-L/sh -lsmartheap

473.astar: basepeak = yes

Continued on next page



# SPEC CINT2006 Result

Copyright 2006-2016 Standard Performance Evaluation Corporation

**Fujitsu**

PRIMERGY RX2560 M2, Intel Xeon E5-2697 v4, 2.30 GHz

**SPECint\_rate2006 = 1580**

**SPECint\_rate\_base2006 = 1520**

**CPU2006 license:** 19  
**Test sponsor:** Fujitsu  
**Tested by:** Fujitsu

**Test date:** May-2016  
**Hardware Availability:** Apr-2016  
**Software Availability:** Sep-2015

## Peak Optimization Flags (Continued)

483.xalanbmk: basepeak = yes

## Peak Other Flags

C benchmarks:

403.gcc: -Dalloca=\_alloca

The flags files that were used to format this result can be browsed at

<http://www.spec.org/cpu2006/flags/Intel-ic16.0-official-linux64.html>

<http://www.spec.org/cpu2006/flags/Fujitsu-Platform-Settings-V1.2-HSW-RevA.html>

You can also download the XML flags sources by saving the following links:

<http://www.spec.org/cpu2006/flags/Intel-ic16.0-official-linux64.xml>

<http://www.spec.org/cpu2006/flags/Fujitsu-Platform-Settings-V1.2-HSW-RevA.xml>

SPEC and SPECint are registered trademarks of the Standard Performance Evaluation Corporation. All other brand and product names appearing in this result are trademarks or registered trademarks of their respective holders.

For questions about this result, please contact the tester.  
For other inquiries, please contact [webmaster@spec.org](mailto:webmaster@spec.org).

Tested with SPEC CPU2006 v1.2.  
Report generated on Thu Jun 30 14:06:26 2016 by SPEC CPU2006 PS/PDF formatter v6932.  
Originally published on 14 June 2016.