



SPEC® CINT2006 Result

Copyright 2006-2016 Standard Performance Evaluation Corporation

Fujitsu

PRIMERGY BX2580 M2, Intel Xeon E5-2698 v4, 2.20 GHz

SPECint®_rate2006 = 1650

SPECint_rate_base2006 = 1580

CPU2006 license: 19

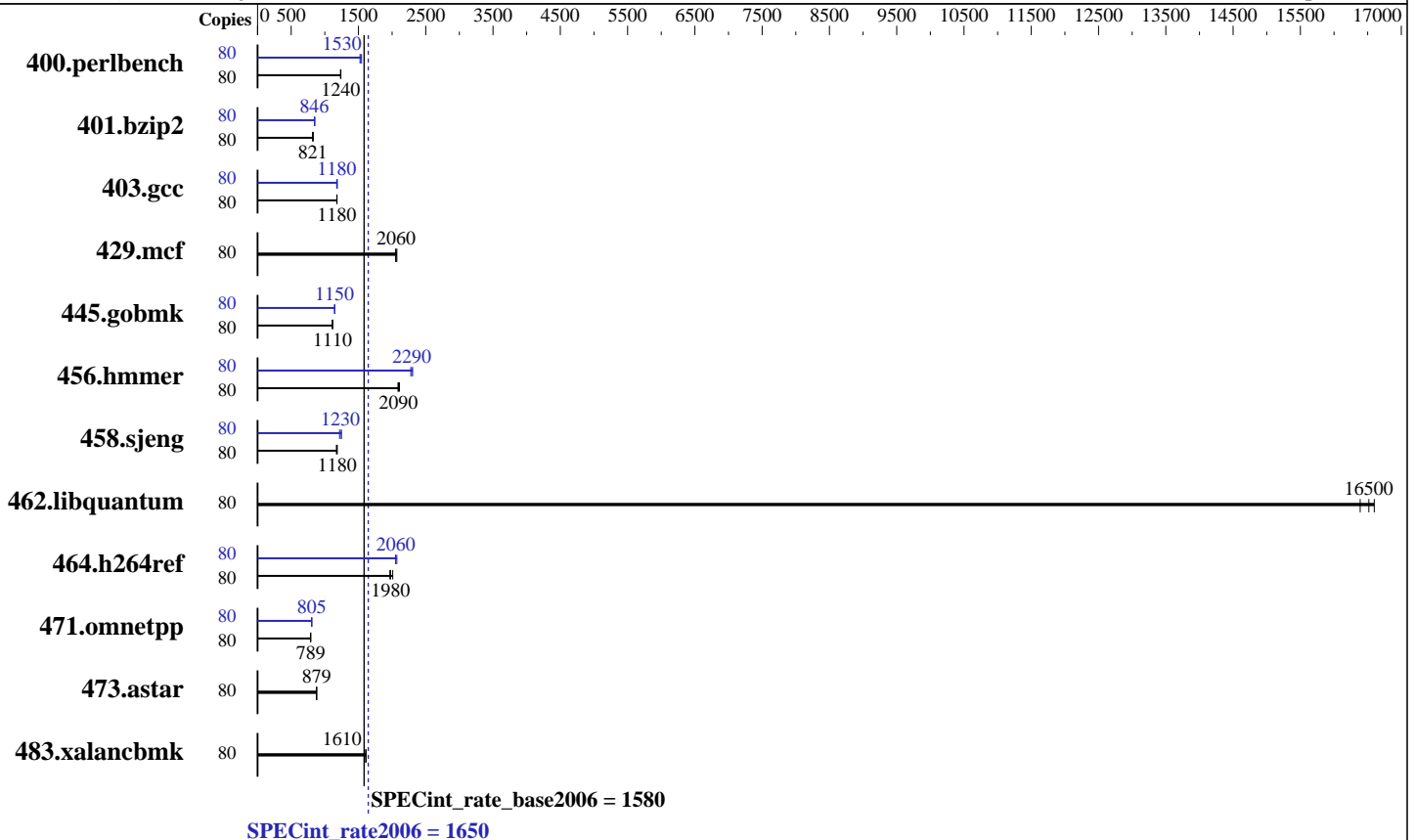
Test sponsor: Fujitsu

Tested by: Fujitsu

Test date: Jun-2016

Hardware Availability: Apr-2016

Software Availability: Sep-2015



Hardware

CPU Name: Intel Xeon E5-2698 v4
 CPU Characteristics: Intel Turbo Boost Technology up to 3.60 GHz
 CPU MHz: 2200
 FPU: Integrated
 CPU(s) enabled: 40 cores, 2 chips, 20 cores/chip, 2 threads/core
 CPU(s) orderable: 1,2 chip
 Primary Cache: 32 KB I + 32 KB D on chip per core
 Secondary Cache: 256 KB I+D on chip per core
 L3 Cache: 50 MB I+D on chip per chip
 Other Cache: None
 Memory: 256 GB (16 x 16 GB 2Rx4 PC4-2400T-R)
 Disk Subsystem: 1 x SATA, 1000 GB, 7200 RPM
 Other Hardware: None

Software

Operating System: SUSE Linux Enterprise Server 12 SP1 (x86_64)
 Kernel 3.12.49-11-default
 Compiler: C/C++; Version 16.0.0.101 of Intel C++ Studio XE for Linux
 Auto Parallel: No
 File System: xfs
 System State: Run level 3 (multi-user)
 Base Pointers: 32-bit
 Peak Pointers: 32/64-bit
 Other Software: Microquill SmartHeap V10.2



SPEC CINT2006 Result

Copyright 2006-2016 Standard Performance Evaluation Corporation

Fujitsu

PRIMERGY BX2580 M2, Intel Xeon E5-2698 v4, 2.20 GHz

SPECint_rate2006 = 1650

SPECint_rate_base2006 = 1580

CPU2006 license: 19
Test sponsor: Fujitsu
Tested by: Fujitsu

Test date: Jun-2016
Hardware Availability: Apr-2016
Software Availability: Sep-2015

Results Table

Benchmark	Base							Peak						
	Copies	Seconds	Ratio	Seconds	Ratio	Seconds	Ratio	Copies	Seconds	Ratio	Seconds	Ratio	Seconds	Ratio
400.perlbench	80	634	1230	631	1240	631	1240	80	510	1530	506	1550	513	1520
401.bzip2	80	940	821	932	828	943	819	80	905	853	912	846	914	845
403.gcc	80	545	1180	546	1180	547	1180	80	543	1190	546	1180	547	1180
429.mcf	80	355	2050	354	2060	352	2070	80	355	2050	354	2060	352	2070
445.gobmk	80	754	1110	753	1110	753	1110	80	733	1140	732	1150	731	1150
456.hammer	80	358	2090	354	2110	356	2090	80	328	2280	324	2310	326	2290
458.sjeng	80	819	1180	818	1180	826	1170	80	775	1250	794	1220	786	1230
462.libquantum	80	99.9	16600	100	16500	101	16400	80	99.9	16600	100	16500	101	16400
464.h264ref	80	900	1970	881	2010	895	1980	80	855	2070	863	2050	861	2060
471.omnetpp	80	633	790	635	788	634	789	80	621	805	621	805	621	805
473.astar	80	642	875	639	879	639	879	80	642	875	639	879	639	879
483.xalancbmk	80	343	1610	342	1610	343	1610	80	343	1610	342	1610	343	1610

Results appear in the order in which they were run. Bold underlined text indicates a median measurement.

Submit Notes

The numactl mechanism was used to bind copies to processors. The config file option 'submit' was used to generate numactl commands to bind each copy to a specific processor. For details, please see the config file.

Operating System Notes

Stack size set to unlimited using "ulimit -s unlimited"

Platform Notes

BIOS configuration:
Energy Performance = Performance
Utilization Profile = Unbalanced
QPI snoop mode: Cluster on Die
COD Enable = Enabled, Early Snoop = Disabled, Home Snoop Dir OSB = Disabled
CPU C1E Support = Disabled
Sysinfo program /home/SPECcpu2006/config/sysinfo.rev6914
\$Rev: 6914 \$ \$Date:: 2014-06-25 #\$ e3fbb8667b5a285932ceab81e28219e1
running on linux-e89z Tue Jun 21 12:43:57 2016

This section contains SUT (System Under Test) info as seen by some common utilities. To remove or add to this section, see:
<http://www.spec.org/cpu2006/Docs/config.html#sysinfo>

From /proc/cpuinfo
model name : Intel(R) Xeon(R) CPU E5-2698 v4 @ 2.20GHz
2 "physical id"s (chips)

Continued on next page



SPEC CINT2006 Result

Copyright 2006-2016 Standard Performance Evaluation Corporation

Fujitsu

PRIMERGY BX2580 M2, Intel Xeon E5-2698 v4, 2.20 GHz

SPECint_rate2006 = 1650

SPECint_rate_base2006 = 1580

CPU2006 license: 19
Test sponsor: Fujitsu
Tested by: Fujitsu

Test date: Jun-2016
Hardware Availability: Apr-2016
Software Availability: Sep-2015

Platform Notes (Continued)

80 "processors"
cores, siblings (Caution: counting these is hw and system dependent. The following excerpts from /proc/cpuinfo might not be reliable. Use with caution.)

```
cpu cores : 20
siblings  : 40
physical 0: cores 0 1 2 3 4 8 9 10 11 12 16 17 18 19 20 24 25 26 27 28
physical 1: cores 0 1 2 3 4 8 9 10 11 12 16 17 18 19 20 24 25 26 27 28
cache size : 25600 KB
```

```
From /proc/meminfo
MemTotal:      264313260 kB
HugePages_Total: 0
Hugepagesize:  2048 kB
```

```
/usr/bin/lsb_release -d
SUSE Linux Enterprise Server 12 SP1
```

```
From /etc/*release* /etc/*version*
SuSE-release:
SUSE Linux Enterprise Server 12 (x86_64)
VERSION = 12
PATCHLEVEL = 1
# This file is deprecated and will be removed in a future service pack or
release.
# Please check /etc/os-release for details about this release.
os-release:
NAME="SLES"
VERSION="12-SP1"
VERSION_ID="12.1"
PRETTY_NAME="SUSE Linux Enterprise Server 12 SP1"
ID="sles"
ANSI_COLOR="0;32"
CPE_NAME="cpe:/o:suse:sles:12:sp1"
```

```
uname -a:
Linux linux-e89z 3.12.49-11-default #1 SMP Wed Nov 11 20:52:43 UTC 2015
(8d714a0) x86_64 x86_64 x86_64 GNU/Linux
```

```
run-level 3 Jun 21 12:43 last=5
```

```
SPEC is set to: /home/SPECcpu2006
Filesystem      Type  Size  Used Avail Use% Mounted on
/dev/sda3       xfs   331G  3.4G  328G   2% /home
Additional information from dmidecode:
```

Warning: Use caution when you interpret this section. The 'dmidecode' program reads system data which is "intended to allow hardware to be accurately determined", but the intent may not be met, as there are frequent changes to hardware, firmware, and the "DMTF SMBIOS" standard.

BIOS FUJITSU // American Megatrends Inc. V5.0.0.11 R1.3.0 for D3321-B1x
Continued on next page



SPEC CINT2006 Result

Copyright 2006-2016 Standard Performance Evaluation Corporation

Fujitsu

PRIMERGY BX2580 M2, Intel Xeon E5-2698 v4, 2.20 GHz

SPECint_rate2006 = 1650

SPECint_rate_base2006 = 1580

CPU2006 license: 19
Test sponsor: Fujitsu
Tested by: Fujitsu

Test date: Jun-2016
Hardware Availability: Apr-2016
Software Availability: Sep-2015

Platform Notes (Continued)

02/19/2016

Memory:

16x Micron Technology 36ASF2G72PZ-2G3A3 16 GB 2 rank 2400 MHz

(End of data from sysinfo program)

General Notes

Environment variables set by runspec before the start of the run:

LD_LIBRARY_PATH = "/home/SPECcpu2006/libs/32:/home/SPECcpu2006/libs/64:/home/SPECcpu2006/sh"

Binaries compiled on a system with 1x Intel Core i5-4670K CPU + 32GB memory using RedHat EL 7.1

Transparent Huge Pages enabled with:

echo always > /sys/kernel/mm/transparent_hugepage/enabled

Filesystem page cache cleared with:

echo 1> /proc/sys/vm/drop_caches

runspec command invoked through numactl i.e.:

numactl --interleave=all runspec <etc>

For information about Fujitsu please visit: <http://www.fujitsu.com>

Base Compiler Invocation

C benchmarks:

icc -m32 -L/opt/intel/compilers_and_libraries_2016/linux/compiler/lib/ia32_lin

C++ benchmarks:

icpc -m32 -L/opt/intel/compilers_and_libraries_2016/linux/compiler/lib/ia32_lin

Base Portability Flags

400.perlbench: -D_FILE_OFFSET_BITS=64 -DSPEC_CPU_LINUX_IA32
401.bzip2: -D_FILE_OFFSET_BITS=64
403.gcc: -D_FILE_OFFSET_BITS=64
429.mcf: -D_FILE_OFFSET_BITS=64
445.gobmk: -D_FILE_OFFSET_BITS=64
456.hmmer: -D_FILE_OFFSET_BITS=64
458.sjeng: -D_FILE_OFFSET_BITS=64
462.libquantum: -D_FILE_OFFSET_BITS=64 -DSPEC_CPU_LINUX
464.h264ref: -D_FILE_OFFSET_BITS=64
471.omnetpp: -D_FILE_OFFSET_BITS=64
473.astar: -D_FILE_OFFSET_BITS=64
483.xalancbmk: -D_FILE_OFFSET_BITS=64 -DSPEC_CPU_LINUX



SPEC CINT2006 Result

Copyright 2006-2016 Standard Performance Evaluation Corporation

Fujitsu

PRIMERGY BX2580 M2, Intel Xeon E5-2698 v4, 2.20 GHz

SPECint_rate2006 = 1650

SPECint_rate_base2006 = 1580

CPU2006 license: 19
Test sponsor: Fujitsu
Tested by: Fujitsu

Test date: Jun-2016
Hardware Availability: Apr-2016
Software Availability: Sep-2015

Base Optimization Flags

C benchmarks:

-xCORE-AVX2 -ipo -O3 -no-prec-div -opt-prefetch
-opt-mem-layout-trans=3

C++ benchmarks:

-xCORE-AVX2 -ipo -O3 -no-prec-div -opt-prefetch
-opt-mem-layout-trans=3 -Wl,-z,muldefs -L/sh -lsmartheap

Base Other Flags

C benchmarks:

403.gcc: -Dalloca=_alloca

Peak Compiler Invocation

C benchmarks (except as noted below):

icc -m32 -L/opt/intel/compilers_and_libraries_2016/linux/compiler/lib/ia32_lin

400.perlbench: icc -m64

401.bzip2: icc -m64

456.hmmer: icc -m64

458.sjeng: icc -m64

C++ benchmarks:

icpc -m32 -L/opt/intel/compilers_and_libraries_2016/linux/compiler/lib/ia32_lin

Peak Portability Flags

400.perlbench: -D_FILE_OFFSET_BITS=64 -DSPEC_CPU_LP64 -DSPEC_CPU_LINUX_X64

401.bzip2: -D_FILE_OFFSET_BITS=64 -DSPEC_CPU_LP64

403.gcc: -D_FILE_OFFSET_BITS=64

429.mcf: -D_FILE_OFFSET_BITS=64

445.gobmk: -D_FILE_OFFSET_BITS=64

456.hmmer: -D_FILE_OFFSET_BITS=64 -DSPEC_CPU_LP64

458.sjeng: -D_FILE_OFFSET_BITS=64 -DSPEC_CPU_LP64

462.libquantum: -D_FILE_OFFSET_BITS=64 -DSPEC_CPU_LINUX

464.h264ref: -D_FILE_OFFSET_BITS=64

471.omnetpp: -D_FILE_OFFSET_BITS=64

473.astar: -D_FILE_OFFSET_BITS=64

Continued on next page



SPEC CINT2006 Result

Copyright 2006-2016 Standard Performance Evaluation Corporation

Fujitsu

PRIMERGY BX2580 M2, Intel Xeon E5-2698 v4, 2.20 GHz

SPECint_rate2006 = 1650

SPECint_rate_base2006 = 1580

CPU2006 license: 19
Test sponsor: Fujitsu
Tested by: Fujitsu

Test date: Jun-2016
Hardware Availability: Apr-2016
Software Availability: Sep-2015

Peak Portability Flags (Continued)

483.xalanbmk: -D_FILE_OFFSET_BITS=64 -DSPEC_CPU_LINUX

Peak Optimization Flags

C benchmarks:

400.perlbench: -xCORE-AVX2(pass 2) -prof-gen:threadsafe(pass 1)
-ipo(pass 2) -O3(pass 2) -no-prec-div(pass 2)
-par-num-threads=1(pass 1) -prof-use(pass 2) -auto-ilp32

401.bzip2: -xCORE-AVX2(pass 2) -prof-gen:threadsafe(pass 1)
-ipo(pass 2) -O3(pass 2) -no-prec-div(pass 2)
-par-num-threads=1(pass 1) -prof-use(pass 2) -opt-prefetch
-auto-ilp32 -ansi-alias

403.gcc: -xCORE-AVX2 -ipo -O3 -no-prec-div

429.mcf: basepeak = yes

445.gobmk: -xCORE-AVX2(pass 2) -prof-gen:threadsafe(pass 1)
-prof-use(pass 2) -par-num-threads=1(pass 1) -ansi-alias
-opt-mem-layout-trans=3

456.hmmer: -xCORE-AVX2 -ipo -O3 -no-prec-div -unroll2 -auto-ilp32

458.sjeng: -xCORE-AVX2(pass 2) -prof-gen:threadsafe(pass 1)
-ipo(pass 2) -O3(pass 2) -no-prec-div(pass 2)
-par-num-threads=1(pass 1) -prof-use(pass 2) -unroll4
-auto-ilp32

462.libquantum: basepeak = yes

464.h264ref: -xCORE-AVX2(pass 2) -prof-gen:threadsafe(pass 1)
-ipo(pass 2) -O3(pass 2) -no-prec-div(pass 2)
-par-num-threads=1(pass 1) -prof-use(pass 2) -unroll2
-ansi-alias

C++ benchmarks:

471.omnetpp: -xCORE-AVX2(pass 2) -prof-gen:threadsafe(pass 1)
-ipo(pass 2) -O3(pass 2) -no-prec-div(pass 2)
-par-num-threads=1(pass 1) -prof-use(pass 2) -ansi-alias
-opt-ra-region-strategy=block -Wl,-z,muldefs
-L/sh -lsmartheap

473.astar: basepeak = yes

Continued on next page



SPEC CINT2006 Result

Copyright 2006-2016 Standard Performance Evaluation Corporation

Fujitsu

PRIMERGY BX2580 M2, Intel Xeon E5-2698 v4, 2.20 GHz

SPECint_rate2006 = 1650

SPECint_rate_base2006 = 1580

CPU2006 license: 19
Test sponsor: Fujitsu
Tested by: Fujitsu

Test date: Jun-2016
Hardware Availability: Apr-2016
Software Availability: Sep-2015

Peak Optimization Flags (Continued)

483.xalanbmk: basepeak = yes

Peak Other Flags

C benchmarks:

403.gcc: -Dalloca=_alloca

The flags files that were used to format this result can be browsed at

<http://www.spec.org/cpu2006/flags/Intel-ic16.0-official-linux64.html>

<http://www.spec.org/cpu2006/flags/Fujitsu-Platform-Settings-V1.2-BDW-RevB.html>

You can also download the XML flags sources by saving the following links:

<http://www.spec.org/cpu2006/flags/Intel-ic16.0-official-linux64.xml>

<http://www.spec.org/cpu2006/flags/Fujitsu-Platform-Settings-V1.2-BDW-RevB.xml>

SPEC and SPECint are registered trademarks of the Standard Performance Evaluation Corporation. All other brand and product names appearing in this result are trademarks or registered trademarks of their respective holders.

For questions about this result, please contact the tester.
For other inquiries, please contact webmaster@spec.org.

Tested with SPEC CPU2006 v1.2.
Report generated on Wed Aug 24 13:12:37 2016 by SPEC CPU2006 PS/PDF formatter v6932.
Originally published on 23 August 2016.