



# SPEC® CINT2006 Result

Copyright 2006-2016 Standard Performance Evaluation Corporation

## Cisco Systems

Cisco UCS C220 M4 (Intel Xeon E5-2658 v4, 2.30 GHz)

**SPECint®2006 = 59.6**

**SPECint\_base2006 = 57.5**

**CPU2006 license:** 9019

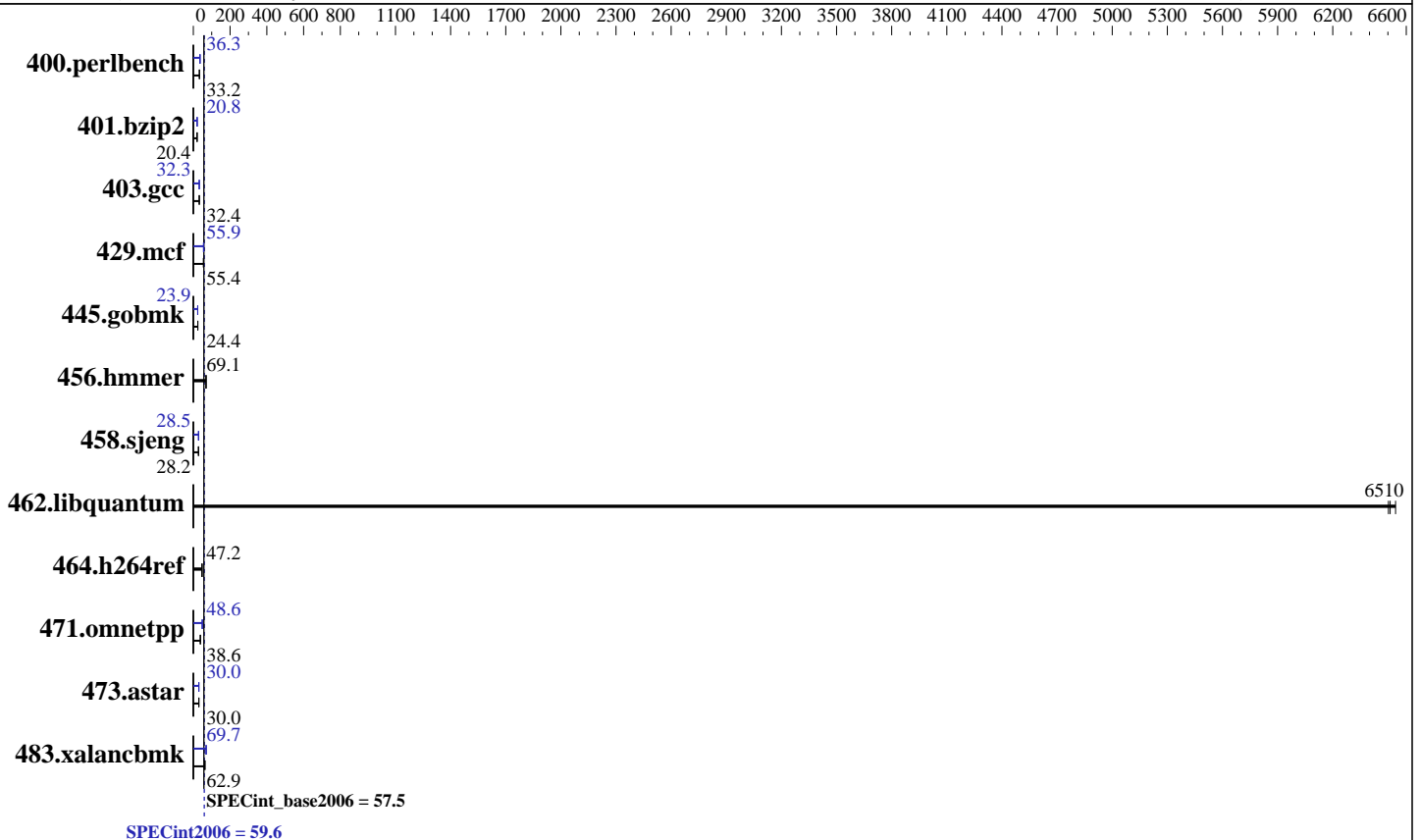
**Test sponsor:** Cisco Systems

**Tested by:** Cisco Systems

**Test date:** Aug-2016

**Hardware Availability:** Apr-2016

**Software Availability:** Dec-2015



### Hardware

**CPU Name:** Intel Xeon E5-2658 v4  
**CPU Characteristics:** Intel Turbo Boost Technology up to 2.80 GHz  
**CPU MHz:** 2300  
**FPU:** Integrated  
**CPU(s) enabled:** 28 cores, 2 chips, 14 cores/chip  
**CPU(s) orderable:** 1,2 chips  
**Primary Cache:** 32 KB I + 32 KB D on chip per core  
**Secondary Cache:** 256 KB I+D on chip per core  
**L3 Cache:** 35 MB I+D on chip per chip  
**Other Cache:** None  
**Memory:** 256 GB (16 x 16 GB 2Rx4 PC4-2400T-R)  
**Disk Subsystem:** 1 x 300 GB SAS HDD, 15K RPM  
**Other Hardware:** None

### Software

**Operating System:** SUSE Linux Enterprise Server 12 SP1 (x86\_64) 3.12.49-11-default  
**Compiler:** C/C++; Version 16.0.0.101 of Intel C++ Studio XE for Linux  
**Auto Parallel:** Yes  
**File System:** xfs  
**System State:** Run level 3 (multi-user)  
**Base Pointers:** 32/64-bit  
**Peak Pointers:** 32/64-bit  
**Other Software:** Microquill SmartHeap V10.2



# SPEC CINT2006 Result

Copyright 2006-2016 Standard Performance Evaluation Corporation

## Cisco Systems

Cisco UCS C220 M4 (Intel Xeon E5-2658 v4, 2.30 GHz)

SPECint2006 = **59.6**

SPECint\_base2006 = **57.5**

CPU2006 license: 9019  
Test sponsor: Cisco Systems  
Tested by: Cisco Systems

Test date: Aug-2016  
Hardware Availability: Apr-2016  
Software Availability: Dec-2015

## Results Table

Benchmark	Base						Peak					
	Seconds	Ratio	Seconds	Ratio	Seconds	Ratio	Seconds	Ratio	Seconds	Ratio	Seconds	Ratio
400.perlbench	294	33.2	<b><u>294</u></b>	<b><u>33.2</u></b>	294	33.2	269	36.3	<b><u>269</u></b>	<b><u>36.3</u></b>	270	36.2
401.bzip2	<b><u>473</u></b>	<b><u>20.4</u></b>	476	20.3	472	20.5	<b><u>465</u></b>	<b><u>20.8</u></b>	465	20.8	464	20.8
403.gcc	249	32.4	248	32.4	<b><u>248</u></b>	<b><u>32.4</u></b>	<b><u>249</u></b>	<b><u>32.3</u></b>	249	32.3	248	32.4
429.mcf	<b><u>164</u></b>	<b><u>55.4</u></b>	162	56.1	166	54.8	165	55.2	<b><u>163</u></b>	<b><u>55.9</u></b>	162	56.4
445.gobmk	430	24.4	<b><u>430</u></b>	<b><u>24.4</u></b>	431	24.4	439	23.9	440	23.8	<b><u>439</u></b>	<b><u>23.9</u></b>
456.hammer	135	69.1	135	69.1	<b><u>135</u></b>	<b><u>69.1</u></b>	135	69.1	135	69.1	<b><u>135</u></b>	<b><u>69.1</u></b>
458.sjeng	430	28.2	<b><u>430</u></b>	<b><u>28.2</u></b>	430	28.2	425	28.5	<b><u>425</u></b>	<b><u>28.5</u></b>	426	28.4
462.libquantum	<b><u>3.18</u></b>	<b><u>6510</u></b>	3.17	6540	3.19	6500	<b><u>3.18</u></b>	<b><u>6510</u></b>	3.17	6540	3.19	6500
464.h264ref	471	47.0	467	47.4	<b><u>469</u></b>	<b><u>47.2</u></b>	471	47.0	467	47.4	<b><u>469</u></b>	<b><u>47.2</u></b>
471.omnetpp	<b><u>162</u></b>	<b><u>38.6</u></b>	161	38.9	166	37.7	128	48.8	<b><u>128</u></b>	<b><u>48.6</u></b>	129	48.6
473.astar	234	30.1	<b><u>234</u></b>	<b><u>30.0</u></b>	234	30.0	233	30.1	234	30.0	<b><u>234</u></b>	<b><u>30.0</u></b>
483.xalancbmk	110	62.6	109	63.0	<b><u>110</u></b>	<b><u>62.9</u></b>	99.1	69.6	98.8	69.8	<b><u>99.0</u></b>	<b><u>69.7</u></b>

Results appear in the order in which they were run. Bold underlined text indicates a median measurement.

## Submit Notes

The config file option 'submit' was used.

## Operating System Notes

Stack size set to unlimited using "ulimit -s unlimited"

## Platform Notes

### BIOS Settings:

```

Intel Hyper-Threading Technology option set to Disabled
CPU performance set to Enterprise
Power Technology set to Energy Efficient
Energy Performance BIAS setting set to Balanced Performance
Memory RAS configuration set to Maximum Performance
Memory Power Saving Mode set to Disabled
QPI Snoop Mode set to Home Directory Snoop with OSB
Sysinfo program /opt/cpu2006-1.2/config/sysinfo.rev6914
$Rev: 6914 $ $Date:: 2014-06-25 #$ e3fbb8667b5a285932ceab81e28219e1
running on linux-6mvl Fri Aug 5 22:27:00 2016

```

This section contains SUT (System Under Test) info as seen by some common utilities. To remove or add to this section, see: <http://www.spec.org/cpu2006/Docs/config.html#sysinfo>

```

From /proc/cpuinfo
model name : Intel(R) Xeon(R) CPU E5-2658 v4@ 2.30GHz
2 "physical id"s (chips)

```

Continued on next page



# SPEC CINT2006 Result

Copyright 2006-2016 Standard Performance Evaluation Corporation

## Cisco Systems

Cisco UCS C220 M4 (Intel Xeon E5-2658 v4, 2.30 GHz)

SPECint2006 = 59.6

SPECint\_base2006 = 57.5

CPU2006 license: 9019

Test sponsor: Cisco Systems

Tested by: Cisco Systems

Test date: Aug-2016

Hardware Availability: Apr-2016

Software Availability: Dec-2015

### Platform Notes (Continued)

28 "processors"  
cores, siblings (Caution: counting these is hw and system dependent. The following excerpts from /proc/cpuinfo might not be reliable. Use with caution.)

```
cpu cores : 14
siblings  : 14
physical 0: cores 0 1 2 3 4 5 6 8 9 10 11 12 13 14
physical 1: cores 0 1 2 3 4 5 6 8 9 10 11 12 13 14
cache size : 35840 KB
```

```
From /proc/meminfo
MemTotal:      264568284 kB
HugePages_Total: 0
Hugepagesize:  2048 kB
```

From /etc/\*release\* /etc/\*version\*

```
SuSE-release:
SUSE Linux Enterprise Server 12 (x86_64)
VERSION = 12
PATCHLEVEL = 1
# This file is deprecated and will be removed in a future service pack or
release.
# Please check /etc/os-release for details about this release.
os-release:
NAME="SLES"
VERSION="12-SP1"
VERSION_ID="12.1"
PRETTY_NAME="SUSE Linux Enterprise Server 12 SP1"
ID="sles"
ANSI_COLOR="0;32"
CPE_NAME="cpe:/o:suse:sles:12:sp1"
```

```
uname -a:
Linux linux-6mvl 3.12.49-11-default #1 SMP Wed Nov 11 20:52:43 UTC 2015
(8d714a0) x86_64 x86_64 x86_64 GNU/Linux
```

run-level 3 Aug 5 05:51

```
SPEC is set to: /opt/cpu2006-1.2
Filesystem      Type  Size  Used Avail Use% Mounted on
/dev/sdal       xfs   279G   16G  263G   6% /
```

Additional information from dmidecode:

Warning: Use caution when you interpret this section. The 'dmidecode' program reads system data which is "intended to allow hardware to be accurately determined", but the intent may not be met, as there are frequent changes to hardware, firmware, and the "DMTF SMBIOS" standard.

BIOS Cisco Systems, Inc. C220M4.2.0.10c.0.032320160810 03/23/2016

Memory:  
16x 0xCE00 M393A2G40EB1-CRC 16 GB 2 rank 2400 MHz  
8x NO DIMM NO DIMM

Continued on next page



# SPEC CINT2006 Result

Copyright 2006-2016 Standard Performance Evaluation Corporation

## Cisco Systems

Cisco UCS C220 M4 (Intel Xeon E5-2658 v4, 2.30 GHz)

SPECint2006 = 59.6

SPECint\_base2006 = 57.5

**CPU2006 license:** 9019  
**Test sponsor:** Cisco Systems  
**Tested by:** Cisco Systems

**Test date:** Aug-2016  
**Hardware Availability:** Apr-2016  
**Software Availability:** Dec-2015

## Platform Notes (Continued)

(End of data from sysinfo program)

## General Notes

Environment variables set by runspec before the start of the run:

KMP\_AFFINITY = "granularity=fine,compact"

LD\_LIBRARY\_PATH = "/opt/cpu2006-1.2/libs/32:/opt/cpu2006-1.2/libs/64:/opt/cpu2006-1.2/sh"

OMP\_NUM\_THREADS = "28"

Binaries compiled on a system with 1x Intel Core i5-4670K CPU + 32GB memory using RedHat EL 7.1

Transparent Huge Pages enabled with:

echo always > /sys/kernel/mm/transparent\_hugepage/enabled

## Base Compiler Invocation

C benchmarks:  
icc -m64

C++ benchmarks:  
icpc -m64

## Base Portability Flags

400.perlbench: -DSPEC\_CPU\_LP64 -DSPEC\_CPU\_LINUX\_X64  
401.bzip2: -DSPEC\_CPU\_LP64  
403.gcc: -DSPEC\_CPU\_LP64  
429.mcf: -DSPEC\_CPU\_LP64  
445.gobmk: -DSPEC\_CPU\_LP64  
456.hmmer: -DSPEC\_CPU\_LP64  
458.sjeng: -DSPEC\_CPU\_LP64  
462.libquantum: -DSPEC\_CPU\_LP64 -DSPEC\_CPU\_LINUX  
464.h264ref: -DSPEC\_CPU\_LP64  
471.omnetpp: -DSPEC\_CPU\_LP64  
473.astar: -DSPEC\_CPU\_LP64  
483.xalancbmk: -DSPEC\_CPU\_LP64 -DSPEC\_CPU\_LINUX

## Base Optimization Flags

C benchmarks:  
-xCORE-AVX2 -ipo -O3 -no-prec-div -parallel -opt-prefetch -auto-p32

C++ benchmarks:  
-xCORE-AVX2 -ipo -O3 -no-prec-div -opt-prefetch -auto-p32  
-Wl,-z,muldefs -L/sh -lsmartheap64



# SPEC CINT2006 Result

Copyright 2006-2016 Standard Performance Evaluation Corporation

## Cisco Systems

Cisco UCS C220 M4 (Intel Xeon E5-2658 v4, 2.30 GHz)

**SPECint2006 = 59.6**

**SPECint\_base2006 = 57.5**

**CPU2006 license:** 9019  
**Test sponsor:** Cisco Systems  
**Tested by:** Cisco Systems

**Test date:** Aug-2016  
**Hardware Availability:** Apr-2016  
**Software Availability:** Dec-2015

## Base Other Flags

C benchmarks:

403.gcc: -Dalloca=\_alloca

## Peak Compiler Invocation

C benchmarks (except as noted below):

icc -m64

400.perlbench: icc -m32 -L/opt/intel/compilers\_and\_libraries\_2016/linux/compiler/lib/ia32\_lin

445.gobmk: icc -m32 -L/opt/intel/compilers\_and\_libraries\_2016/linux/compiler/lib/ia32\_lin

C++ benchmarks (except as noted below):

icpc -m32 -L/opt/intel/compilers\_and\_libraries\_2016/linux/compiler/lib/ia32\_lin

473.astar: icpc -m64

## Peak Portability Flags

400.perlbench: -D\_FILE\_OFFSET\_BITS=64 -DSPEC\_CPU\_LINUX\_IA32

401.bzip2: -DSPEC\_CPU\_LP64

403.gcc: -DSPEC\_CPU\_LP64

429.mcf: -DSPEC\_CPU\_LP64

445.gobmk: -D\_FILE\_OFFSET\_BITS=64

456.hmmmer: -DSPEC\_CPU\_LP64

458.sjeng: -DSPEC\_CPU\_LP64

462.libquantum: -DSPEC\_CPU\_LP64 -DSPEC\_CPU\_LINUX

464.h264ref: -DSPEC\_CPU\_LP64

471.omnetpp: -D\_FILE\_OFFSET\_BITS=64

473.astar: -DSPEC\_CPU\_LP64

483.xalancbmk: -D\_FILE\_OFFSET\_BITS=64 -DSPEC\_CPU\_LINUX

## Peak Optimization Flags

C benchmarks:

400.perlbench: -xCORE-AVX2(pass 2) -prof-gen:threadsafe(pass 1)  
-ipo(pass 2) -O3(pass 2) -no-prec-div(pass 2)  
-par-num-threads=1(pass 1) -prof-use(pass 2) -opt-prefetch  
-ansi-alias

401.bzip2: -xCORE-AVX2(pass 2) -prof-gen:threadsafe(pass 1)  
-ipo(pass 2) -O3(pass 2) -no-prec-div  
-par-num-threads=1(pass 1) -prof-use(pass 2) -auto-ilp32

Continued on next page



# SPEC CINT2006 Result

Copyright 2006-2016 Standard Performance Evaluation Corporation

Cisco Systems

SPECint2006 = 59.6

Cisco UCS C220 M4 (Intel Xeon E5-2658 v4, 2.30 GHz)

SPECint\_base2006 = 57.5

CPU2006 license: 9019

Test date: Aug-2016

Test sponsor: Cisco Systems

Hardware Availability: Apr-2016

Tested by: Cisco Systems

Software Availability: Dec-2015

## Peak Optimization Flags (Continued)

401.bzip2 (continued):

-opt-prefetch -ansi-alias

403.gcc: -xCORE-AVX2 -ipo -O3 -no-prec-div -inline-calloc

-opt-malloc-options=3 -auto-ilp32

429.mcf: -xCORE-AVX2 -ipo -O3 -no-prec-div -parallel

-opt-prefetch -auto-p32

445.gobmk: -xCORE-AVX2(pass 2) -prof-gen:threadsafe(pass 1)

-prof-use(pass 2) -par-num-threads=1(pass 1) -ansi-alias

456.hmmr: basepeak = yes

458.sjeng: -xCORE-AVX2(pass 2) -prof-gen:threadsafe(pass 1)

-ipo(pass 2) -O3(pass 2) -no-prec-div(pass 2)

-par-num-threads=1(pass 1) -prof-use(pass 2) -unroll4

462.libquantum: basepeak = yes

464.h264ref: basepeak = yes

C++ benchmarks:

471.omnetpp: -xCORE-AVX2(pass 2) -prof-gen:threadsafe(pass 1)

-ipo(pass 2) -O3(pass 2) -no-prec-div(pass 2)

-par-num-threads=1(pass 1) -prof-use(pass 2)

-opt-ra-region-strategy=block

-ansi-alias

-Wl,-z,muldefs -L/sh -lsmartheap

473.astar: -xCORE-AVX2 -ipo -O3 -no-prec-div -opt-prefetch

-auto-p32 -Wl,-z,muldefs -L/sh -lsmartheap64

483.xalancbmk: -xCORE-AVX2 -ipo -O3 -no-prec-div -opt-prefetch

-ansi-alias -Wl,-z,muldefs -L/sh -lsmartheap

## Peak Other Flags

C benchmarks:

403.gcc: -Dalloca=\_alloca

The flags files that were used to format this result can be browsed at

<http://www.spec.org/cpu2006/flags/Intel-ic16.0-official-linux64.html>

<http://www.spec.org/cpu2006/flags/Cisco-Platform-Settings-V1.2-revE.html>



# SPEC CINT2006 Result

Copyright 2006-2016 Standard Performance Evaluation Corporation

## Cisco Systems

Cisco UCS C220 M4 (Intel Xeon E5-2658 v4, 2.30 GHz)

**SPECint2006 = 59.6**

**SPECint\_base2006 = 57.5**

**CPU2006 license:** 9019

**Test sponsor:** Cisco Systems

**Tested by:** Cisco Systems

**Test date:** Aug-2016

**Hardware Availability:** Apr-2016

**Software Availability:** Dec-2015

You can also download the XML flags sources by saving the following links:

<http://www.spec.org/cpu2006/flags/Intel-ic16.0-official-linux64.xml>

<http://www.spec.org/cpu2006/flags/Cisco-Platform-Settings-V1.2-revE.xml>

SPEC and SPECint are registered trademarks of the Standard Performance Evaluation Corporation. All other brand and product names appearing in this result are trademarks or registered trademarks of their respective holders.

For questions about this result, please contact the tester.  
For other inquiries, please contact [webmaster@spec.org](mailto:webmaster@spec.org).

Tested with SPEC CPU2006 v1.2.

Report generated on Tue Sep 6 16:55:18 2016 by SPEC CPU2006 PS/PDF formatter v6932.

Originally published on 6 September 2016.